



**DEMI BRACKE**

# **STREAMLINING THE IMPLEMENTATION PROCESS IN DOW'S ENTERPRISE DELIVERY DEPARTMENT**

**VISUALIZING AND OPTIMIZING EFFICIENCY  
FOR ENHANCED PERFORMANCE**

**HZ UNIVERSITY OF APPLIED SCIENCES**

**22 June 2023**

# Table of contents

---

Introduction

---

Recommendations

---

Professional Product

---

Feedback on Professional Product

---

Value added to the company

# Introduction

## The Purpose of the research

- Lack of understanding
- Long onboarding process
- Improvements needed

# Research Question

“How can the process of a project of the Enterprise Delivery department at Dow be *visualized* and become *more efficient*?”



# Recommendations

Implement the comprehensive Knowledge Transfer (KT)

Implement a better onboarding process

Adopt a hybrid agile-waterfall project management methodology

Update the test management tool (ALM)

# Implement the comprehensive Knowledge Transfer (KT)



Suitable	Feasible	Acceptable
<ul style="list-style-type: none"><li>• Innovation and continuous improvements</li></ul>	<ul style="list-style-type: none"><li>• Existing expertise</li></ul>	<ul style="list-style-type: none"><li>• Accepted by the company</li></ul>
<ul style="list-style-type: none"><li>• Collaboration and teamwork</li></ul>	<ul style="list-style-type: none"><li>• Lessons Learned</li></ul>	<ul style="list-style-type: none"><li>• Efficiency and collaboration</li></ul>
<ul style="list-style-type: none"><li>• Efficiency and productivity</li></ul>	<ul style="list-style-type: none"><li>• SharePoint</li></ul>	

# Implement a better onboarding process

Suitable	Feasible	Acceptable
<ul style="list-style-type: none"><li>Enhanced support for new employees</li></ul>	<ul style="list-style-type: none"><li>Existing framework</li></ul>	<ul style="list-style-type: none"><li>Accepted by the company</li></ul>
<ul style="list-style-type: none"><li>Faster integration and productivity</li></ul>	<ul style="list-style-type: none"><li>Available resources</li></ul>	<ul style="list-style-type: none"><li>Benefits for both the organization and its employees</li></ul>
<ul style="list-style-type: none"><li>Cultural integration and social connection</li></ul>	<ul style="list-style-type: none"><li>Organizational support</li></ul>	

# Adopt a hybrid agile-waterfall project management methodology

Suitable	Feasible	Acceptable
<ul style="list-style-type: none"><li>Detailed project strategy</li></ul>	<ul style="list-style-type: none"><li>Team flexibility and expertise</li></ul>	<ul style="list-style-type: none"><li>Accepted by the company</li></ul>
<ul style="list-style-type: none"><li>Flexibility</li></ul>	<ul style="list-style-type: none"><li>Current framework</li></ul>	<ul style="list-style-type: none"><li>Opportunities for collaboration</li></ul>
<ul style="list-style-type: none"><li>Adaptability</li></ul>	<ul style="list-style-type: none"><li>Project diversity</li></ul>	



# Update the test management tool (ALM)

Suitable	Feasible	Acceptable
<ul style="list-style-type: none"><li>• Addresses current and future testing needs</li></ul>	<ul style="list-style-type: none"><li>• Necessary resources are present</li></ul>	<ul style="list-style-type: none"><li>• Accepted by the company</li></ul>
<ul style="list-style-type: none"><li>• Enhanced features and capabilities</li></ul>	<ul style="list-style-type: none"><li>• User experience</li></ul>	<ul style="list-style-type: none"><li>• Stakeholders will view the update positively</li></ul>
<ul style="list-style-type: none"><li>• Improves efficiency</li></ul>		

# Professional Product

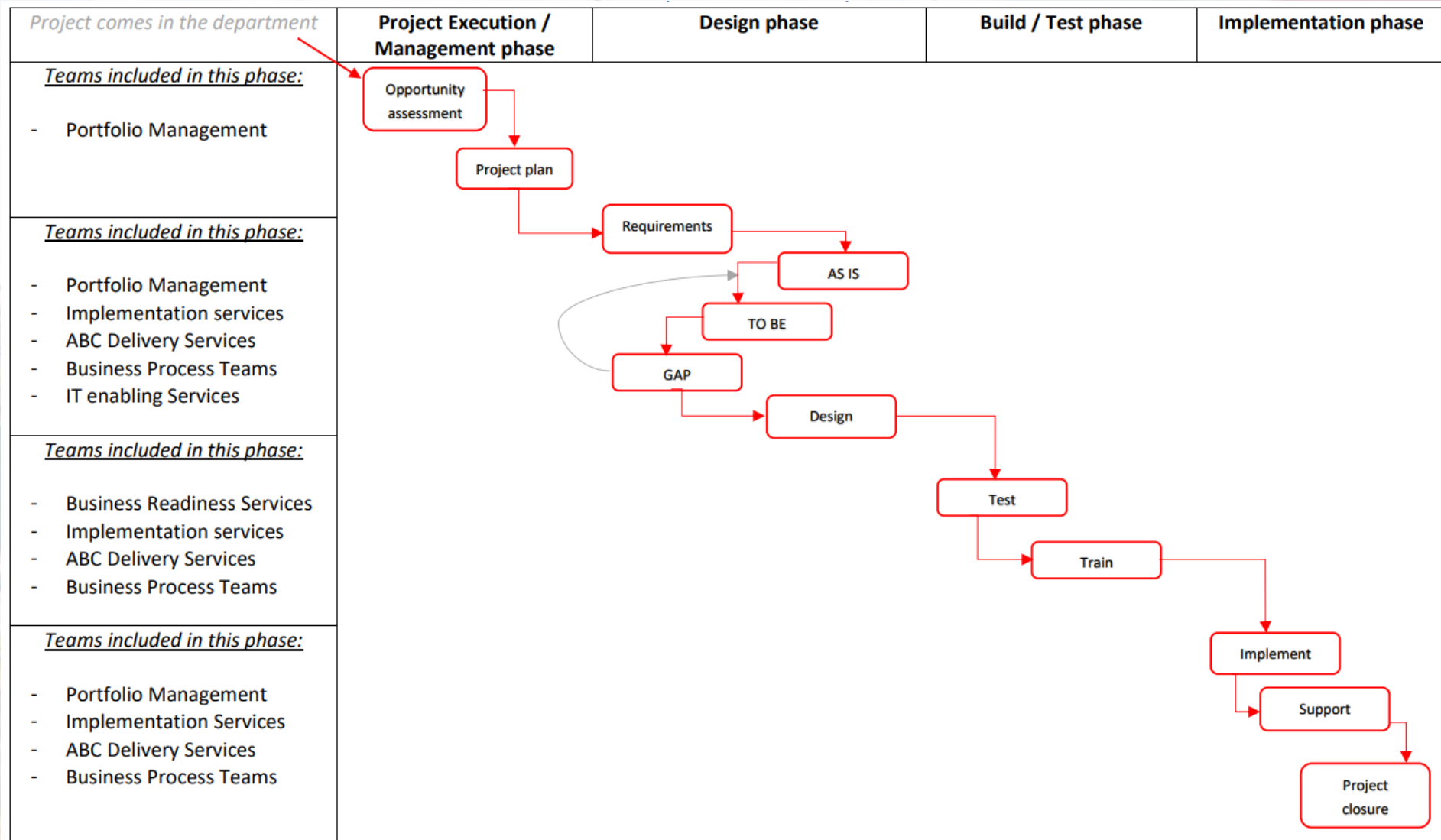
“Visualized”

Swimlane

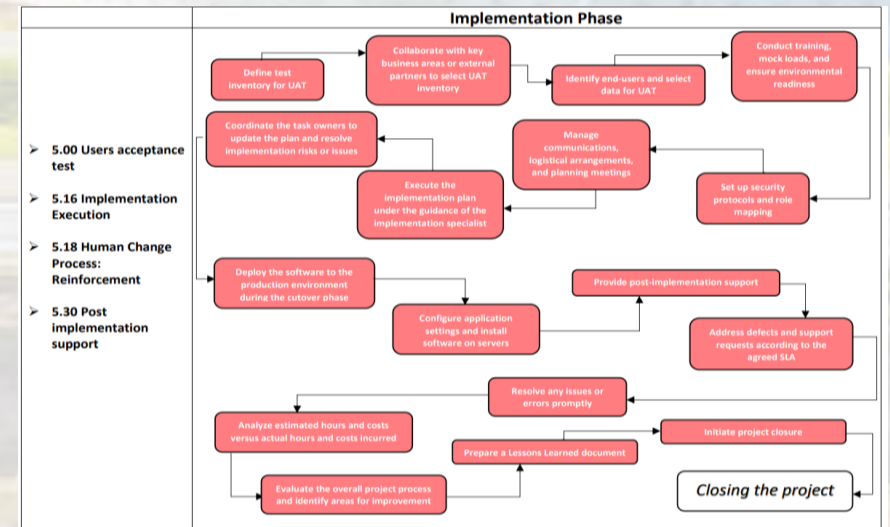
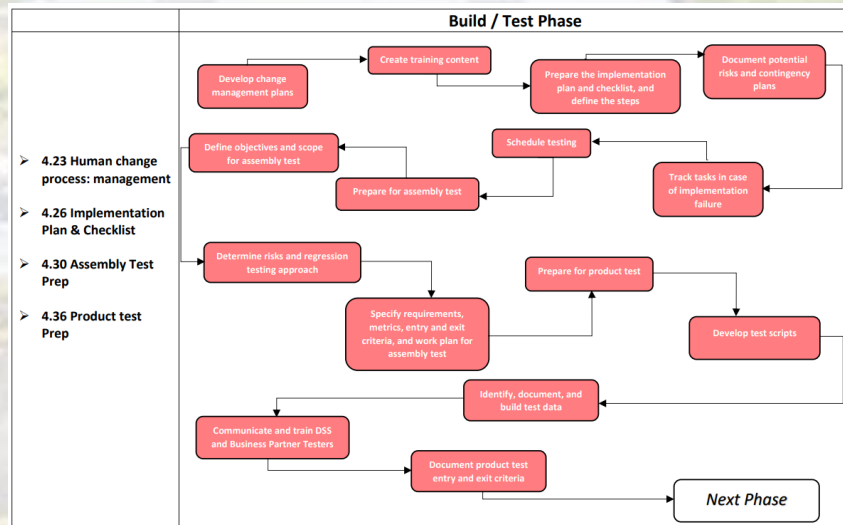
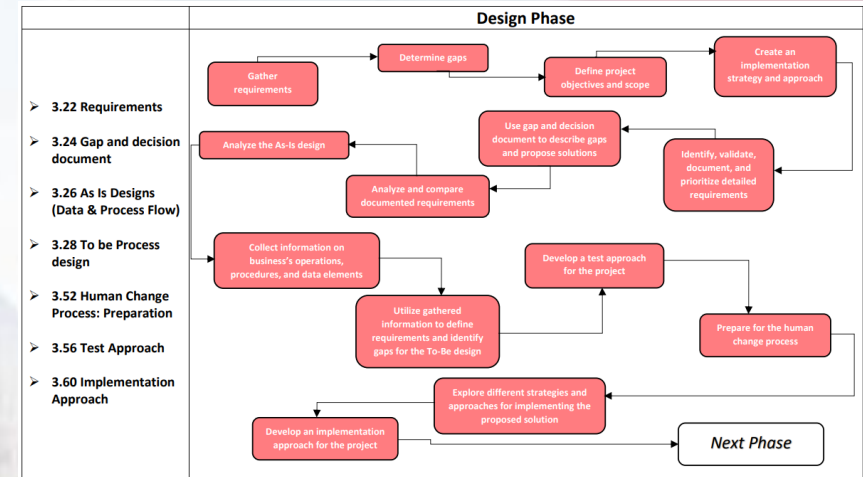
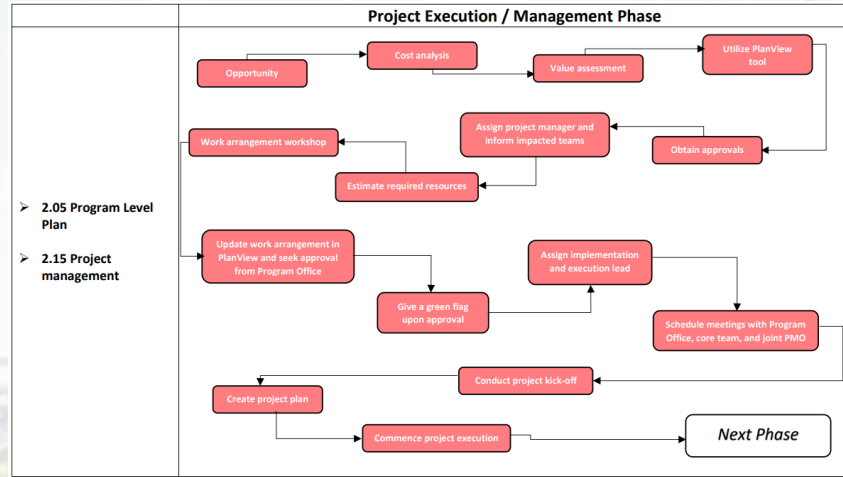
“More efficient”

Implementation plans

# Swimlane

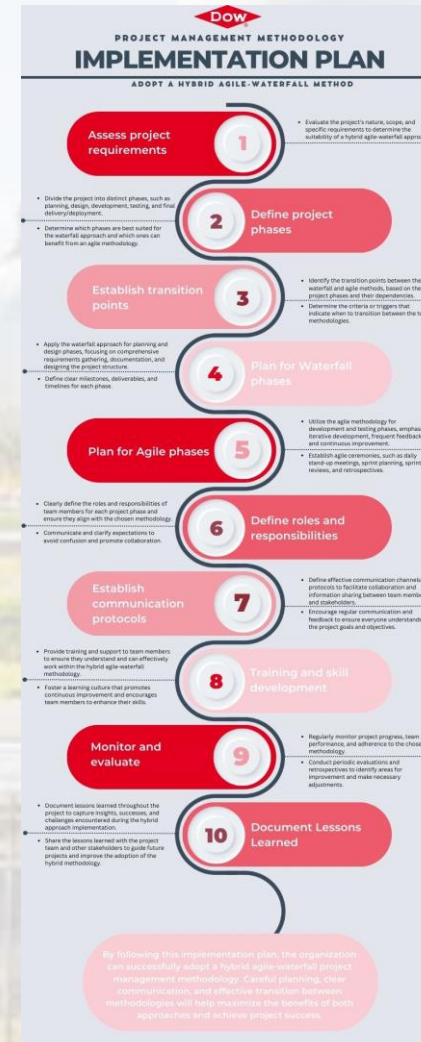


# Swimlane per phase





# Implementation Plans





# Feedback on Professional Product

Received positively

Future changes/improvements

Comments

# Quote in-company supervisors

“The product showed the difficulty on how Dow addresses the IT related initiation and implementation of projects. The thesis provide an implementation plan on how to address these difficulties. This document is foundational that we can use to improve our process and the way we execute our projects”

# Value added to the company

Visualization of the implementation process

New insights into optimizing efficiency



A photograph of a large industrial chemical plant, likely a Dow facility, featuring several large white storage tanks with the Dow logo, green storage containers, and a complex network of pipes and distillation columns in the background under a blue sky with clouds. The text "Thank You!" is overlaid in the center.

Thank You!