

Policy changes in Dutch higher education

Quality in diversity: what works?

Pierre Poell
Rutger Kappe

Programme

- Dutch higher education in a nutshell
- Quality in diversity: Strategic agenda for higher education

Focus on: student-study fit

- Moving forward enrolment date
- Matching activities
- First results
- Discussion

Higher education in The Netherlands

Binary system

- Academic higher education: academic university (AU)
- 17 institutions, 255.500 students
- 54.400 first year students

- Professional higher education: university of applied sciences (UAS)
- 35 institutions, 446.500 students
- 98.500 first year students

(februari 2014)

Some characteristics until 2013-2014

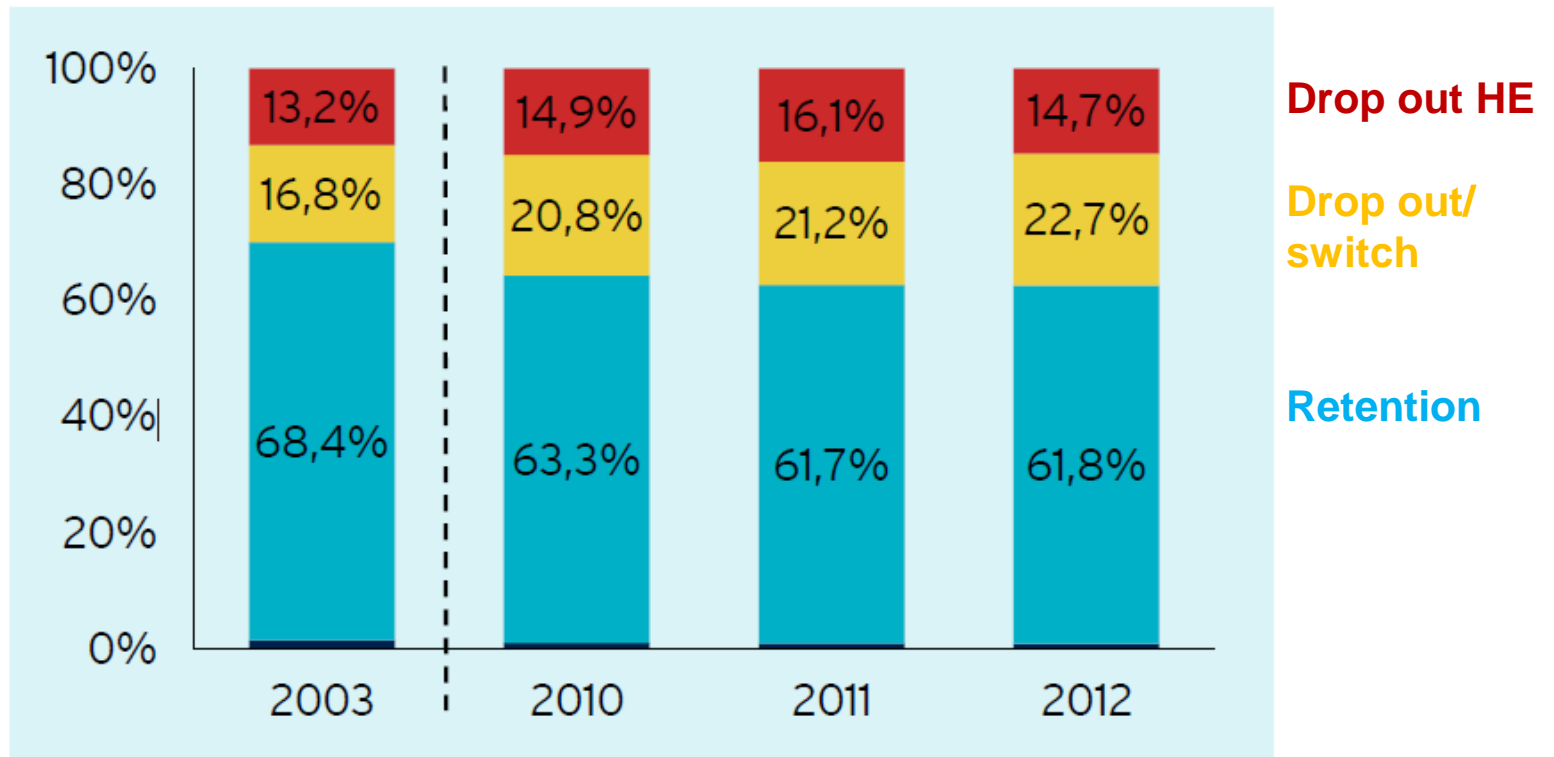
- Enrolment mainly based on legally required diplomas
- Selection options very limited by law
- Legal fee of €1906 per year
- Most UAS-students stay at home ('free' public transport)

Focus on the student-study fit

- As from 2013-2014, all bachelor's programmes will introduce a compulsory '**matching**' procedure (studiekeuzecheck)
- This matching procedure runs before the start of the academic year
- **Final enrolment date changed** from 1 September to 1 May to enable HE institutions to organize matching activities

Drop out and retention rates

Figure. Situation after one year



Matching

- Enable student and institutions to check that the correct choice of study has been made
- Form, content, obligation to participate: to be determined by institutions
- Participation includes an advice (recommendation)
- Students have a legal right to participate in a matching activity and to get an advice

**ORIENTATION
PHASE**



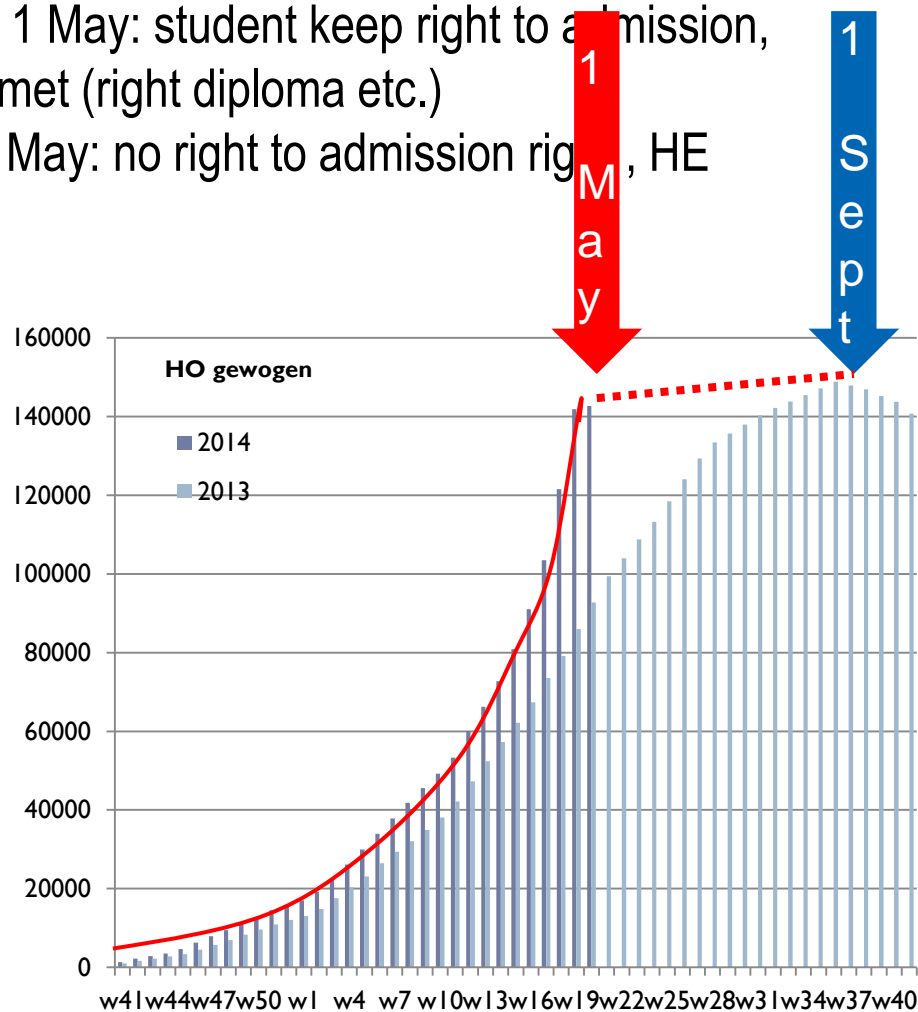
MATCHING



**START
PROGRAM &
STUDENT
COACHING**

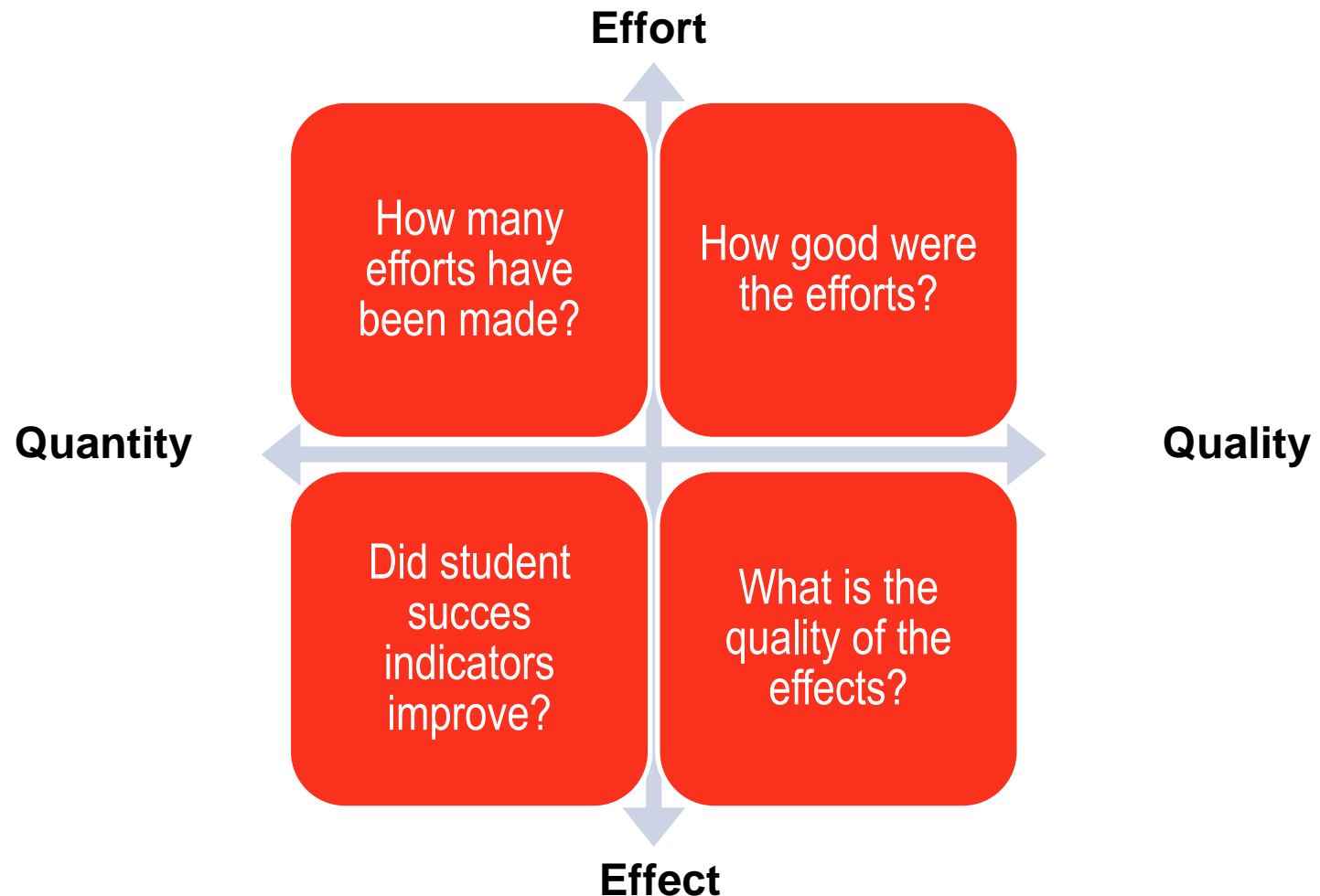
Enrolment date: large effect

- Request to enrol made before 1 May: student keep right to admission, provided other conditions are met (right diploma etc.)
- Request to enrol made after 1 May: no right to admission right, HE institution decides
- Student can change his/her study choice (in case there is no 'match')



Joint research model (6 UAS)

Results Accountabilty Framework (Friedman, 2000)



Matching activities



One day study experience at Uni., interview optional



Homework – 1 day lectures at Uni – knowledge test



Online questionnaire (oriëntation behavior)



Extensive online questionnaire and interview at Uni

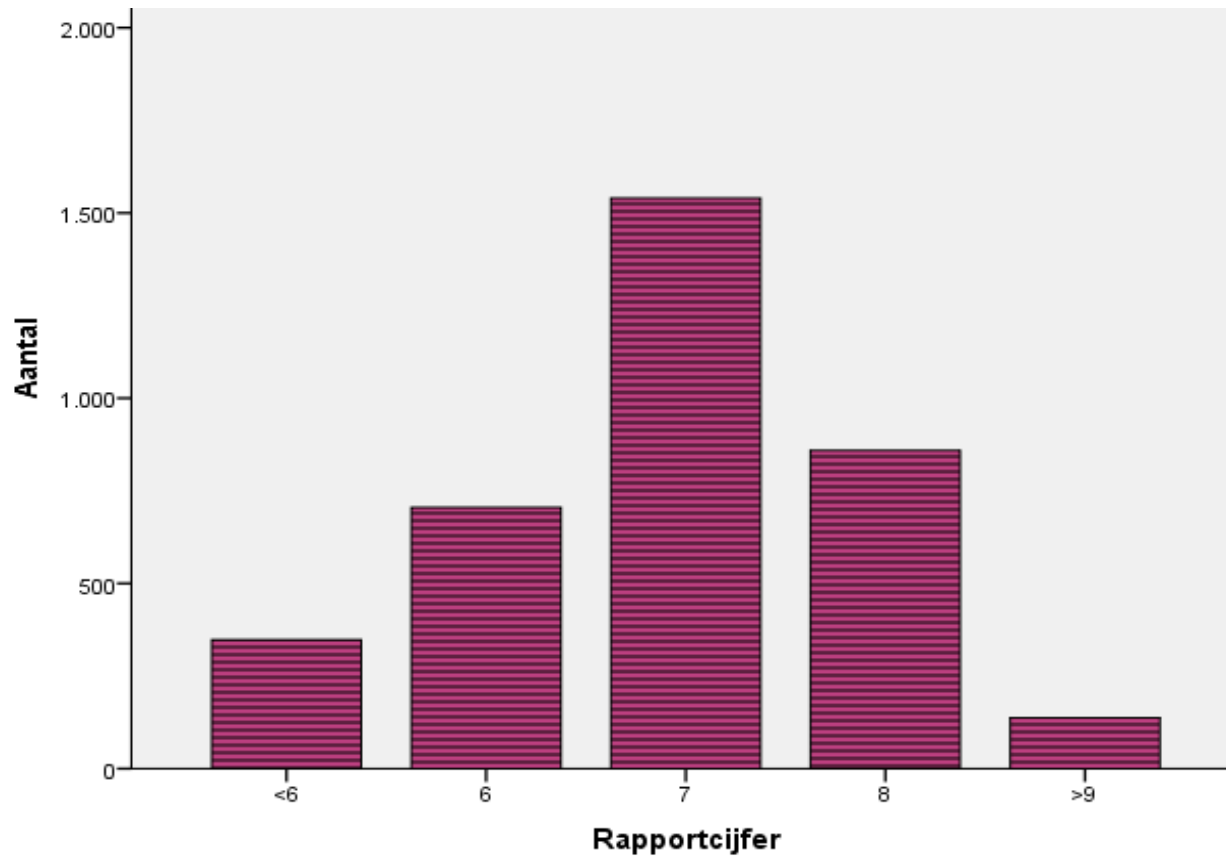


Online questionnaire



Online questionnaire (reality check), compulsory

Student evaluation



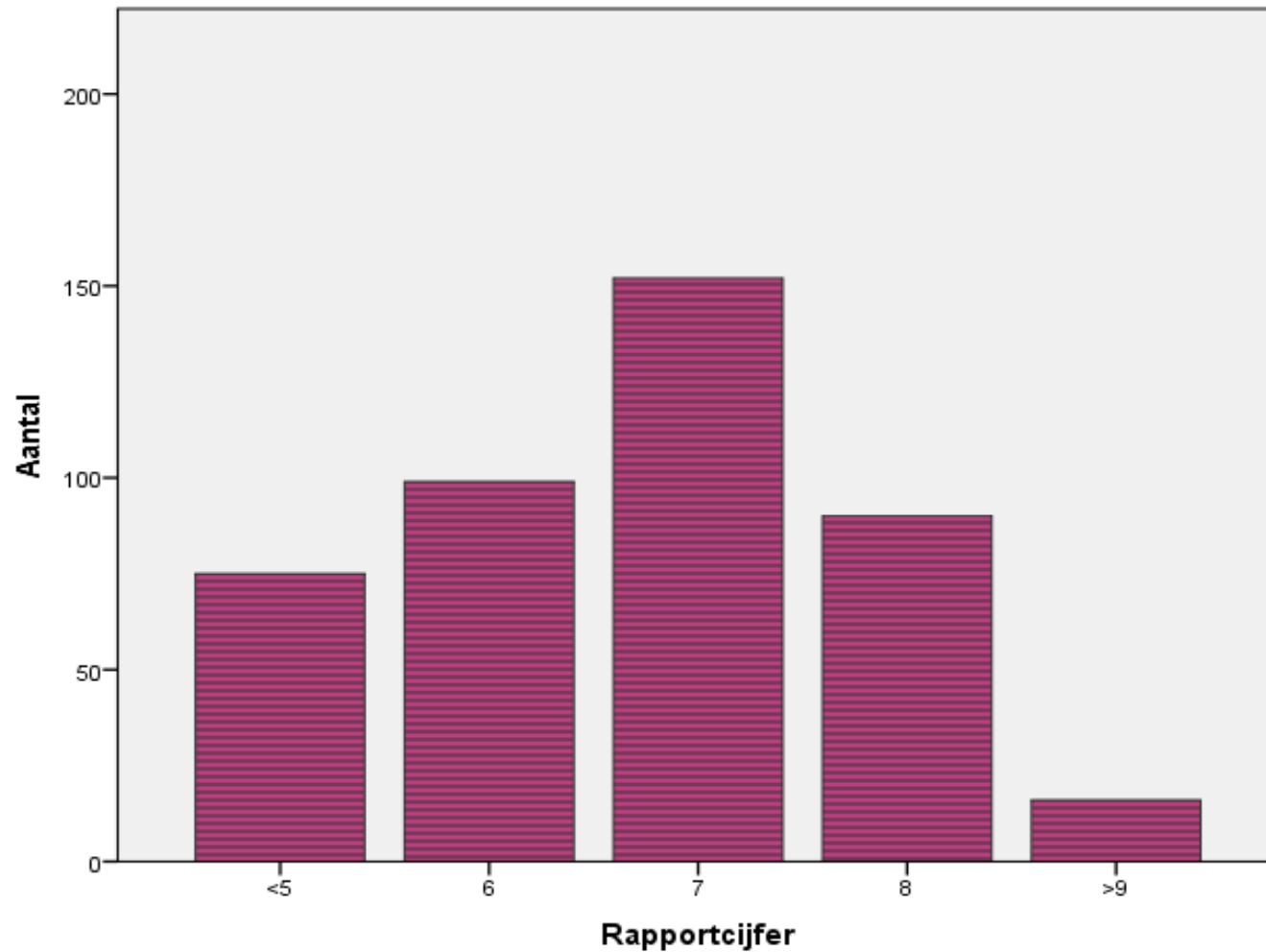
Quotes of students

Een goede manier om studenten kennis te laten maken met de opleiding. Zo kunnen ze zelf bekijken wat ze vinden van de opleiding.

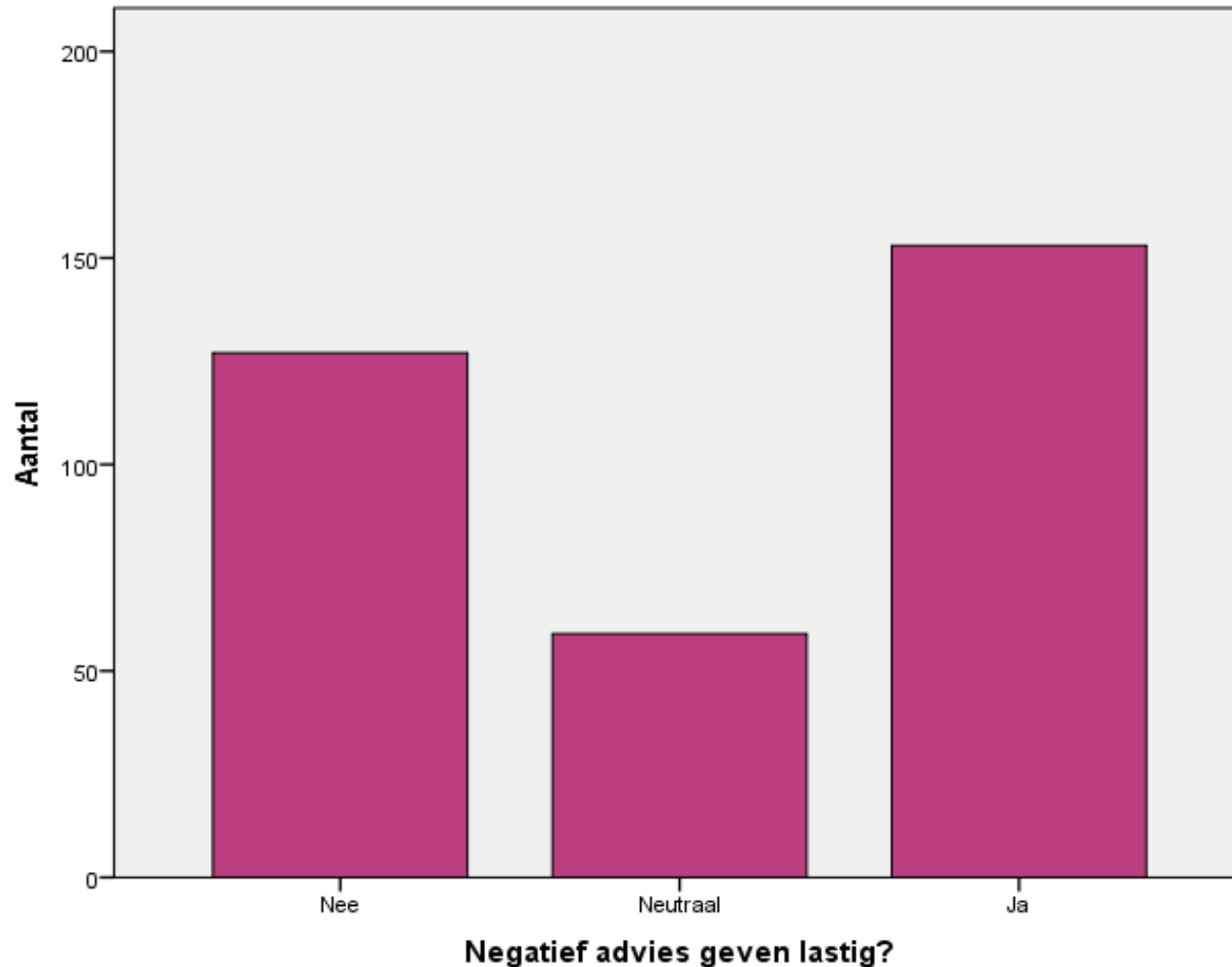
Ik hoop dat ik de stof op het hbo goed begrijp en genoeg begeleiding krijg op momenten dat ik de lessen ~~moelijk~~ niet snap

~~Het~~ Het college wat we kregen over de trends in Toerisme was precies ~~hetzelfde~~ hetzelfde op de meeloopdag ~~Ik had hem al gezien op die dag dus~~ vond dat niet zo goed gertgeld.

Teacher evaluation



Advice: teacher experience



Registration and conversion

October status registrations, (per cohort)

Cohort	Inholland University		The Hague University	
	2013	2014	2013	2014
Registrations	17692	21145	10897	12915
Active per october	49%	41%	67%	53%
Withdrawn	51%	59%	33%	47%

Study success 6 months compared

March status study results* (per cohort)

Cohort	2013	2014
Active per okt	8748	8575
Active per march	7113	7232
period 1 + 2	15,1	15,9
period 1	6,6	7,0
period 2	8,5	8,9

** avg results of active & withdrawn students*

Matching and study success

Matching- and studyresults after 6 months of study (ft, active students)

	Inholland University			The Hague University	
	N	ECp1/2	EC p1	N	EC p1
No match	69	18,1	8,0	834	6,1
Partial match	602	16,3	6,7	nb	nb
Positive match	4425	19,5	8,4	4895	7,5
Fixus/no matching	1602	17,5	7,5	792	6,3
<i>Total/avg</i>	6698	18,7	7,8	6521	7,2

If you want to know more

Full report Quality in diversity

<http://www.government.nl/ministries/ocw/documents-and-publications/reports/2012/08/30/quality-in-diversity.html>

Contact details:

Rutger.Kappe@inholland.nl or f.r.kappe@vu.nl

Pierre.Poell@inholland.nl