

# The Refuge in-between

Exam panels by Pieter Krog





**IN THE PAST DECADE MALTA HAS RECEIVED OVER 15,000 REFUGEES BY BOAT. THESE MIGRANTS CROSS THE MEDITERRANEAN SEA FOR A BETTER LIFE. ON THE ISLAND THEY ARE STUCK IN LIMBO, WITHOUT A FUTURE OR PLAN. THE SOCIAL ENVIRONMENT IS HARSH AND HOSTILE, THE SOCIAL SPACE FOR THEM, *NON EXISTING*.**

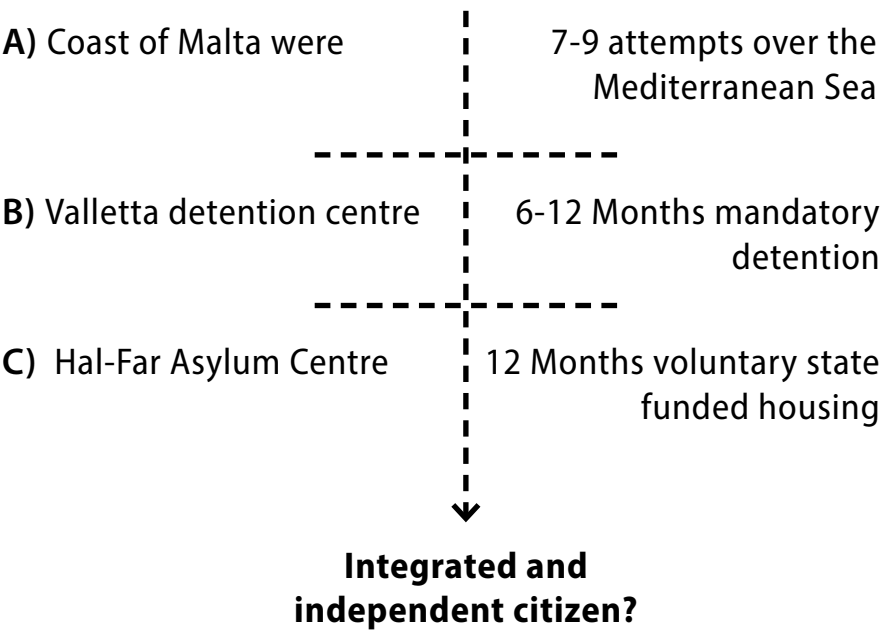
**MY PROPOSAL IS TO TRANSFORM THE EXISTING REFUGEE RECEPTION CENTRE BY USING ARCHITECTURE AS A TOOL TO CREATE A MULTITUDE OF SOCIAL CONNECTION OPPORTUNITIES. THE SPACE WILL UPLIFT THE LIFE'S OF THE PEOPLE BY INTRODUCING FLEXIBLE PUBLIC SPACES, SOCIAL ECONOMIC PROGRAMS AND IMPROVED LIVING CONDITIONS.**



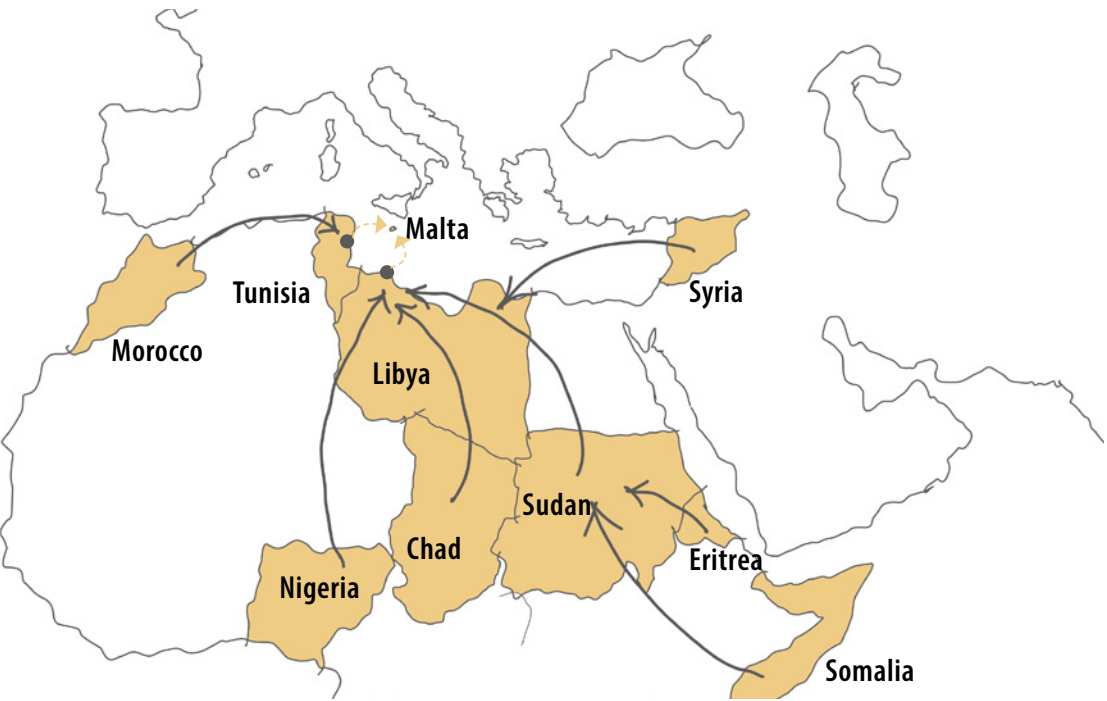
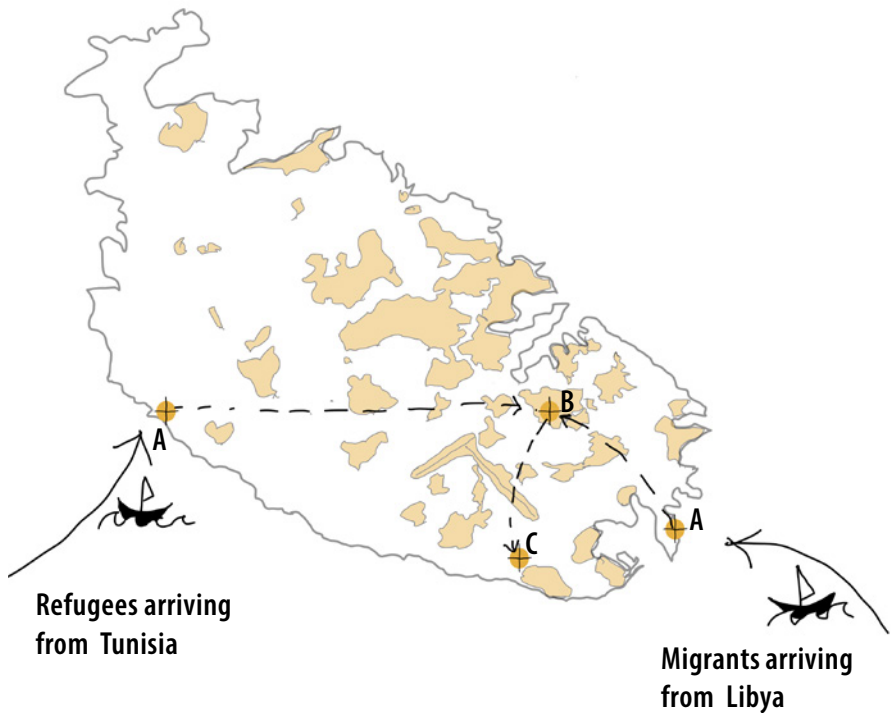


# Refugee Migration Patterns to Malta

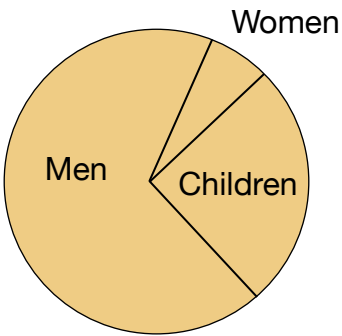
## Migrant journey to refugee



The majority of refugee boat arrival on Malta are from Africa and Syria. The give up their whole life and travel as much as 7,000 km to reach the northern shores of Africa. The majority of boats then either depart from Tripoli in Libya or Sousse in Tunisia to try and cross the Mediterranean and reach Malta. The Journey from the shore of Africa to Malta takes only a day, but because due to overloaded unsafe boats, only 1 out of 3 people will survive the journey (UNHCR, 2021).



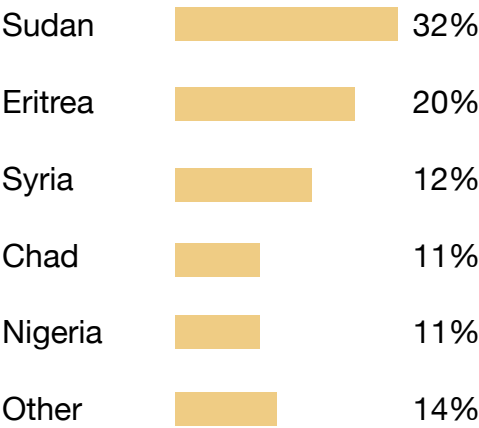
Sea Arrivals - Demographics  
Jan - June 2020



Population of Refugees in Malta  
**9,000** (2% of population)

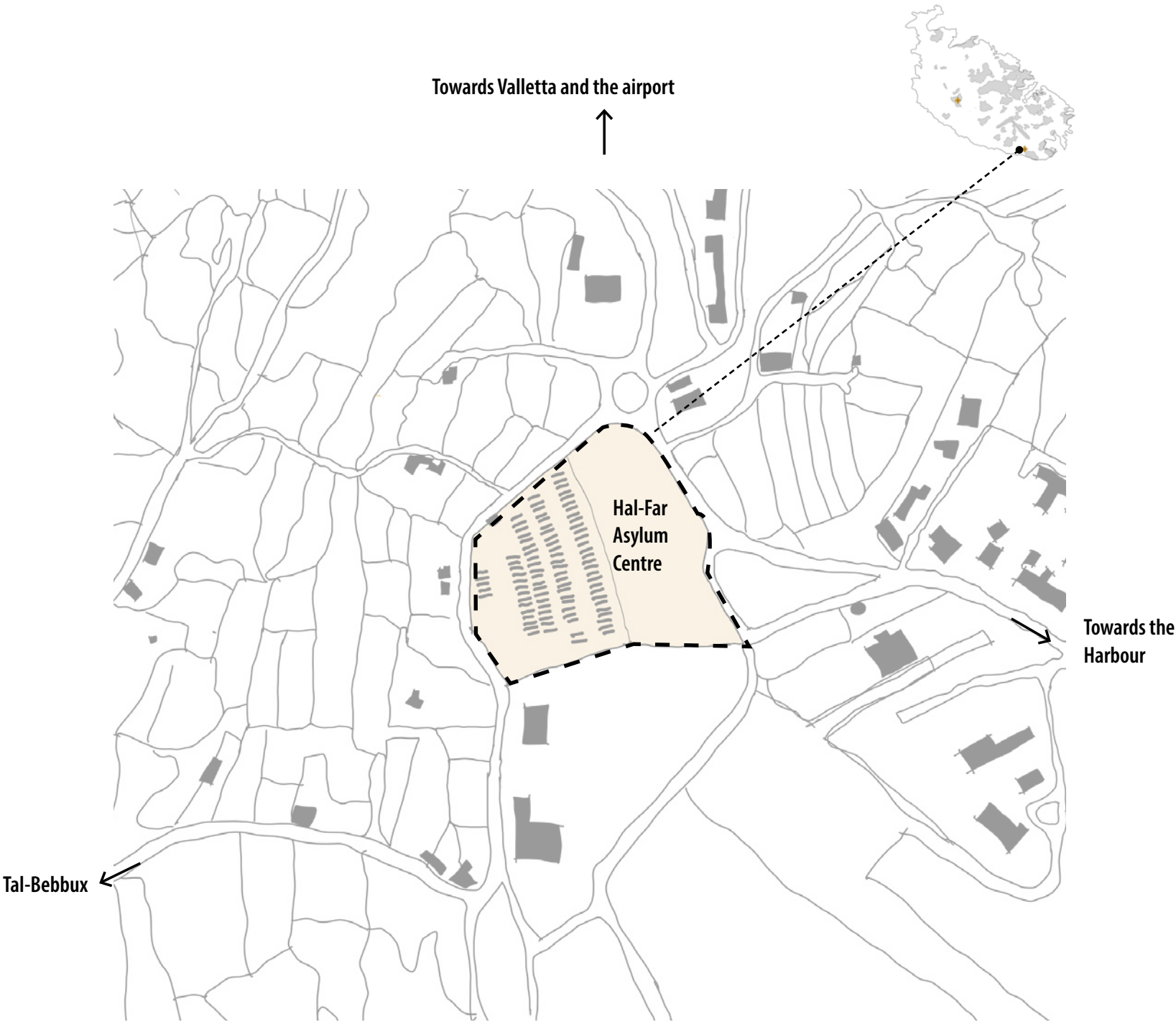
Decrease of  
**33%** of arrival 2019-2021

Sea Arrivals - Top 5 Nationalities  
Until Jan 2021



source: UNHCR





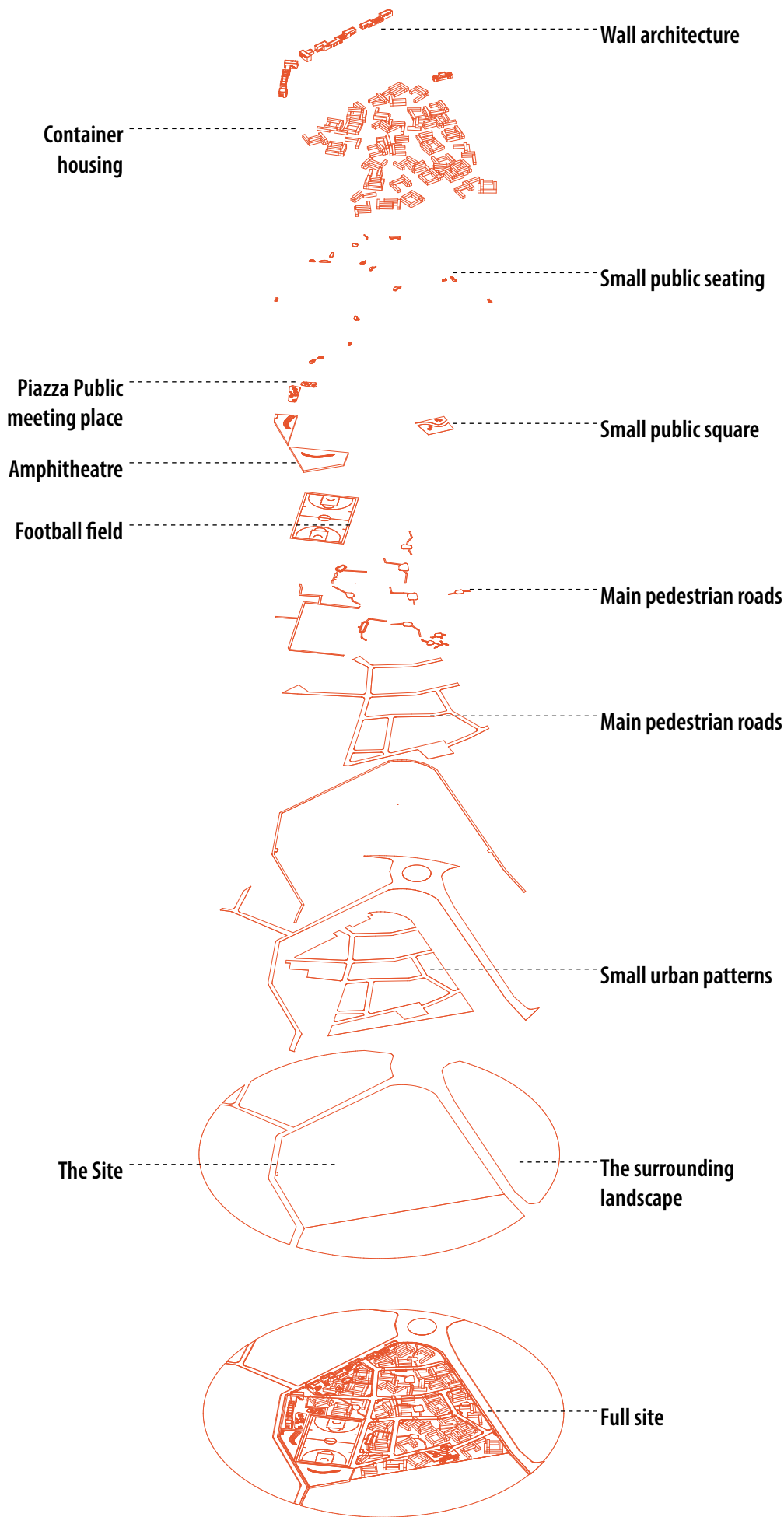
Photos of the Hal-Far Open Centre  
taken September 2020



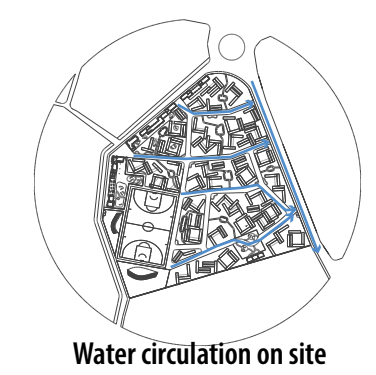
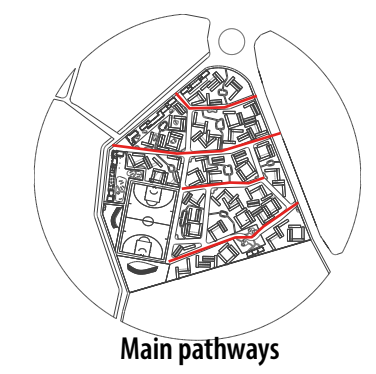
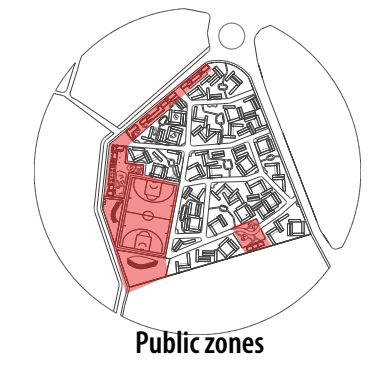
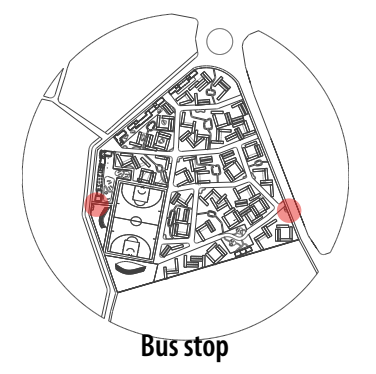
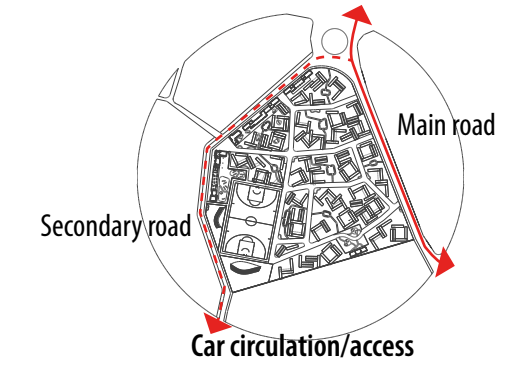
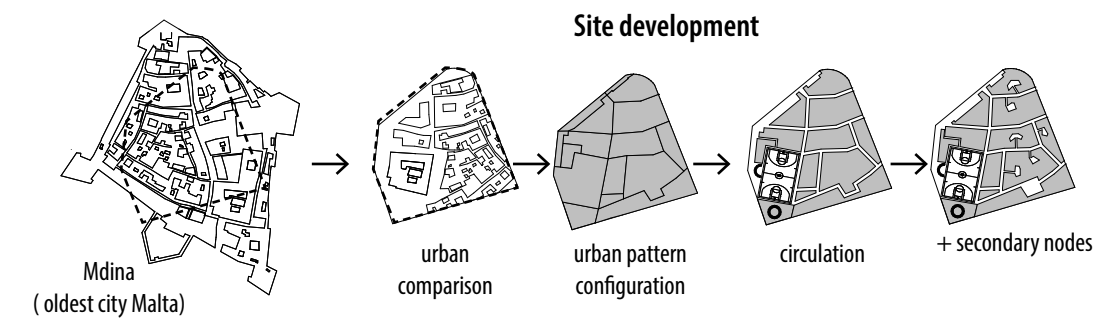
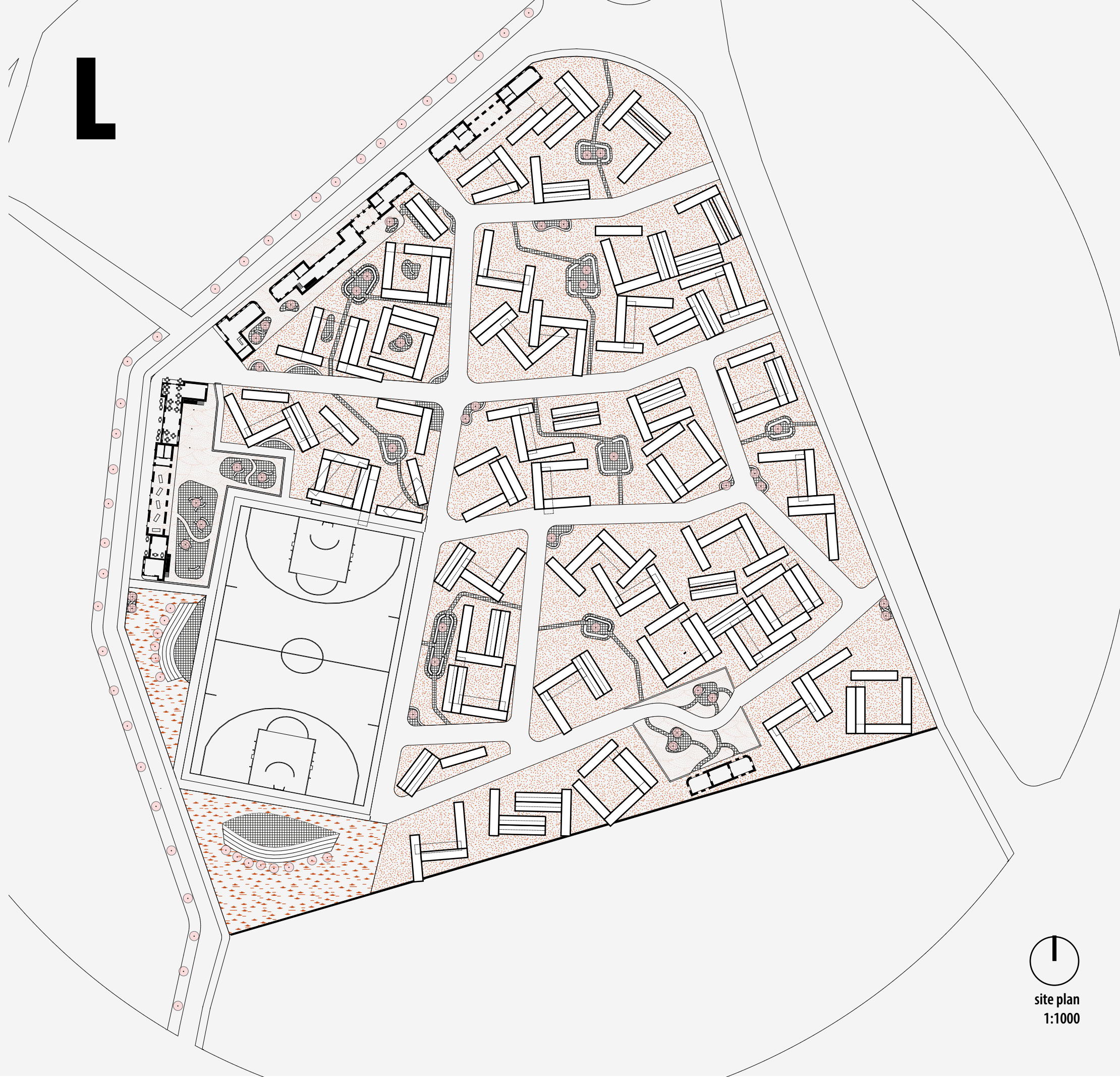
L



Site Axo



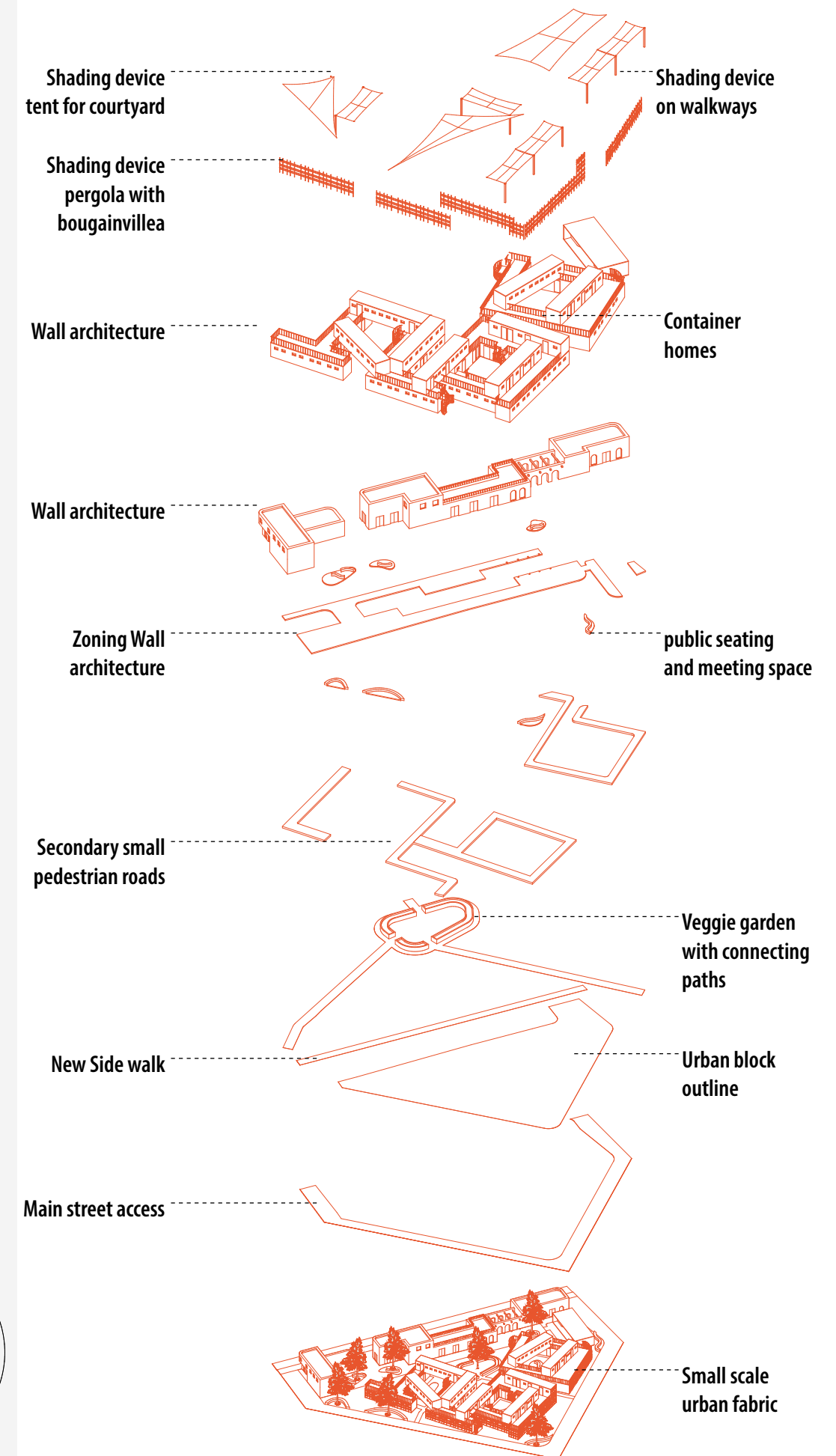




site plan  
1:1000



M







**Vegetable garden**



# Wood workshop







**Art workshop & court yard**





**Wood workshop**





**Wood workshop**







**Art workshop**





Lecture hall

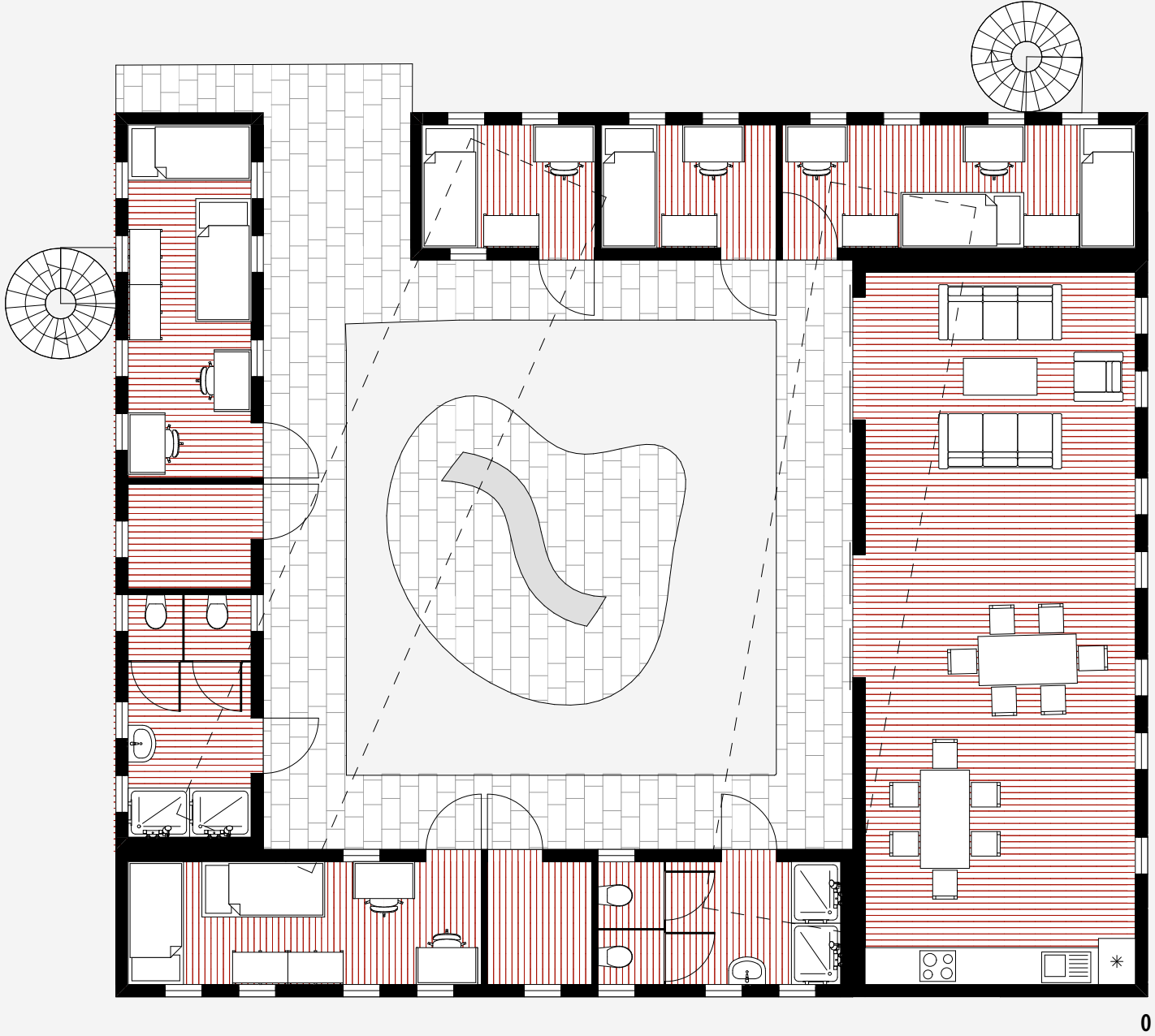




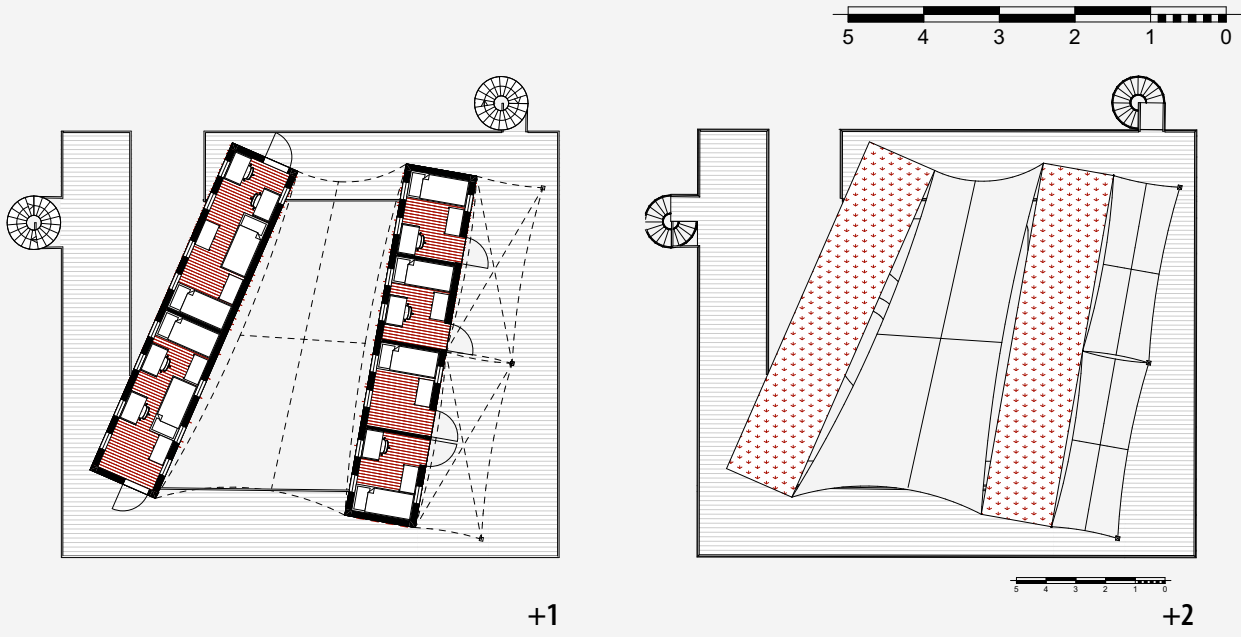
Lecture hall



S/M

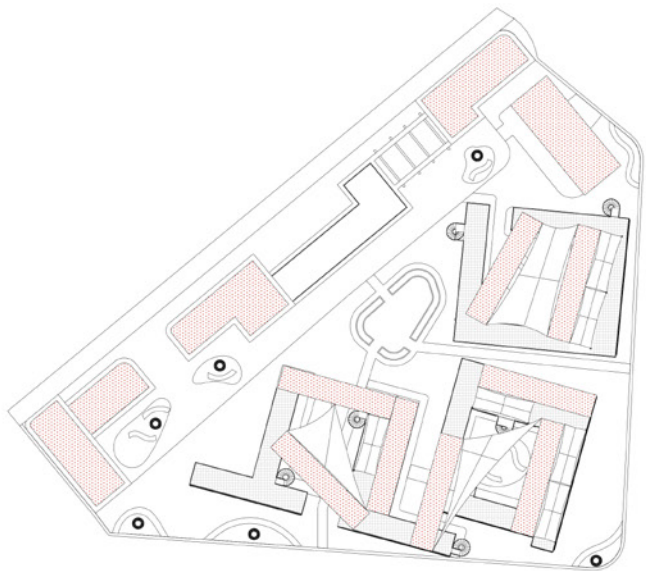


0

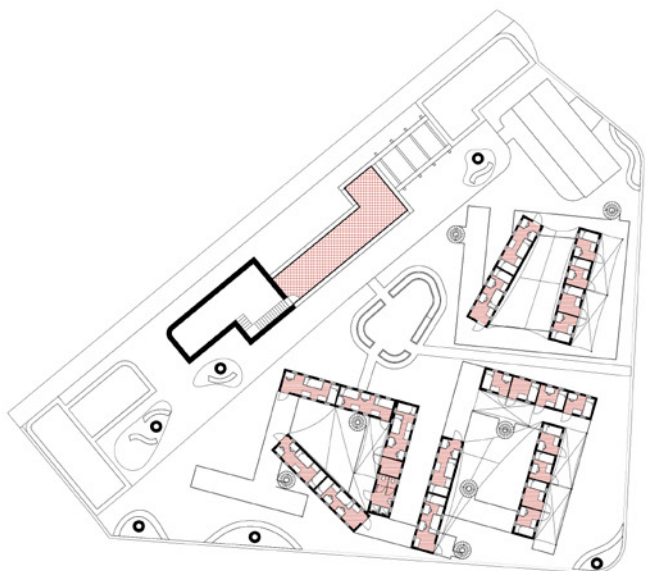


+1

+2



+2



+1



0





**Container home court yard**

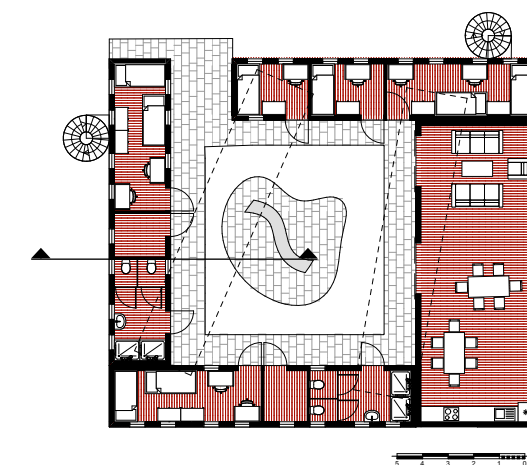
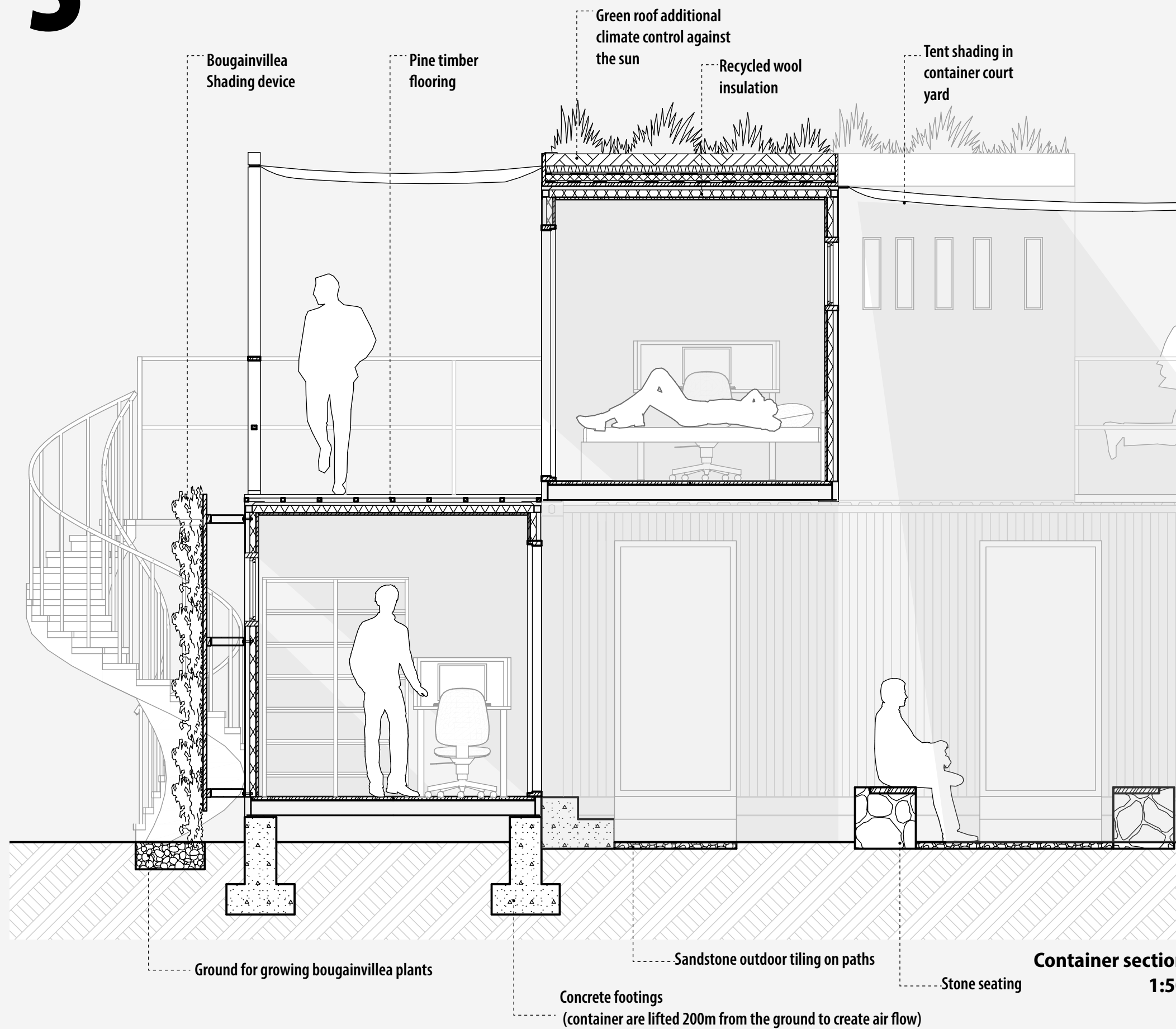




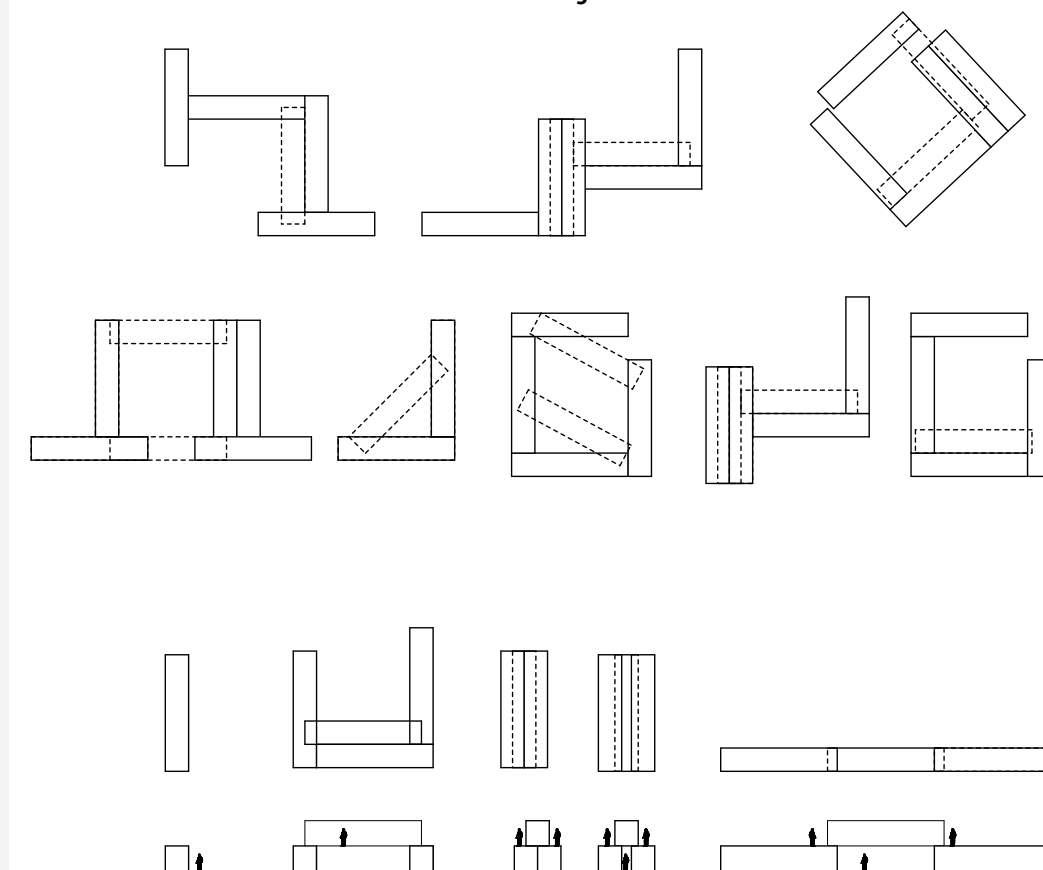
**Container home kictchen/lounge**



S



Container configuration







**Container home**

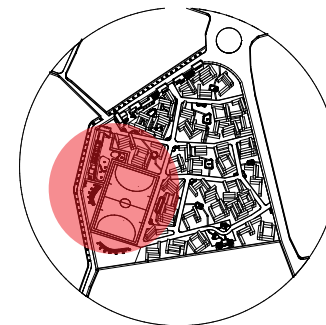
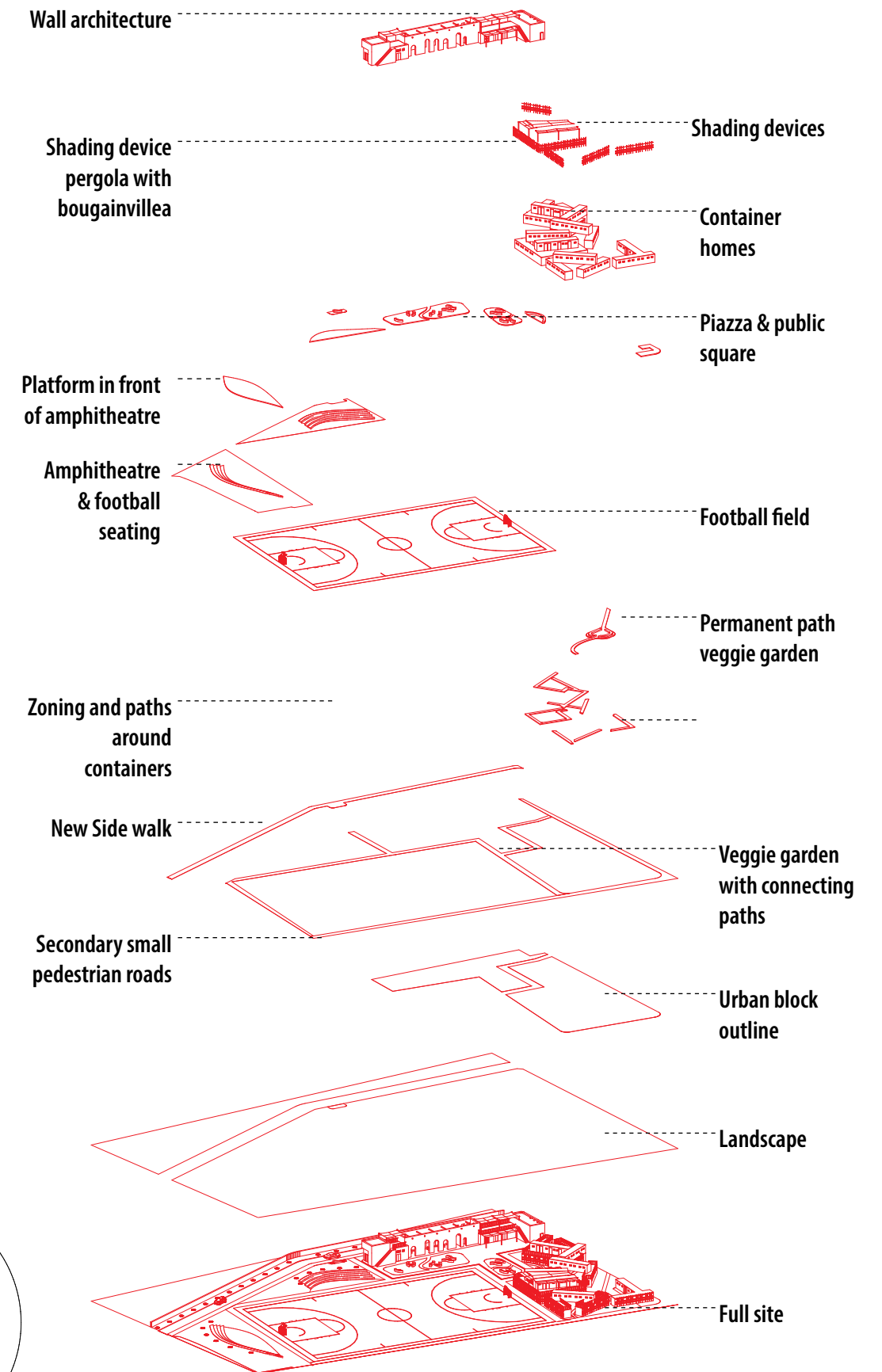
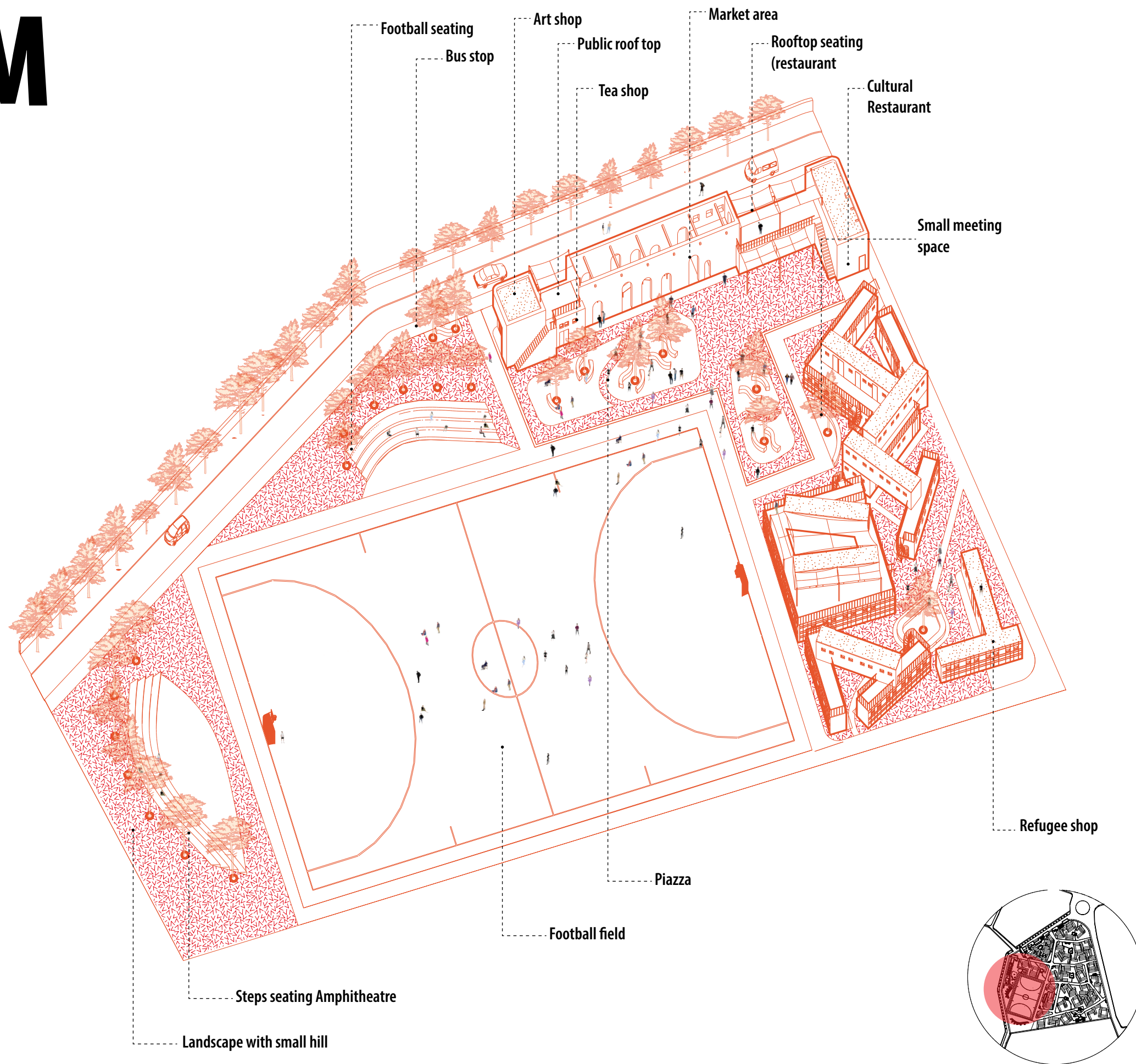




**Container home green screen**

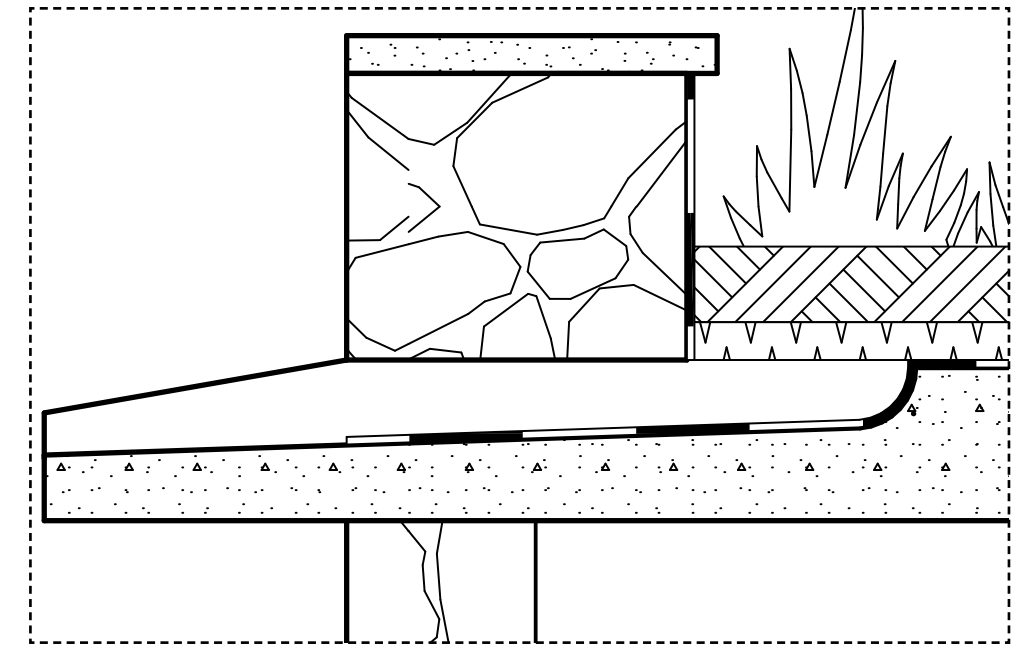
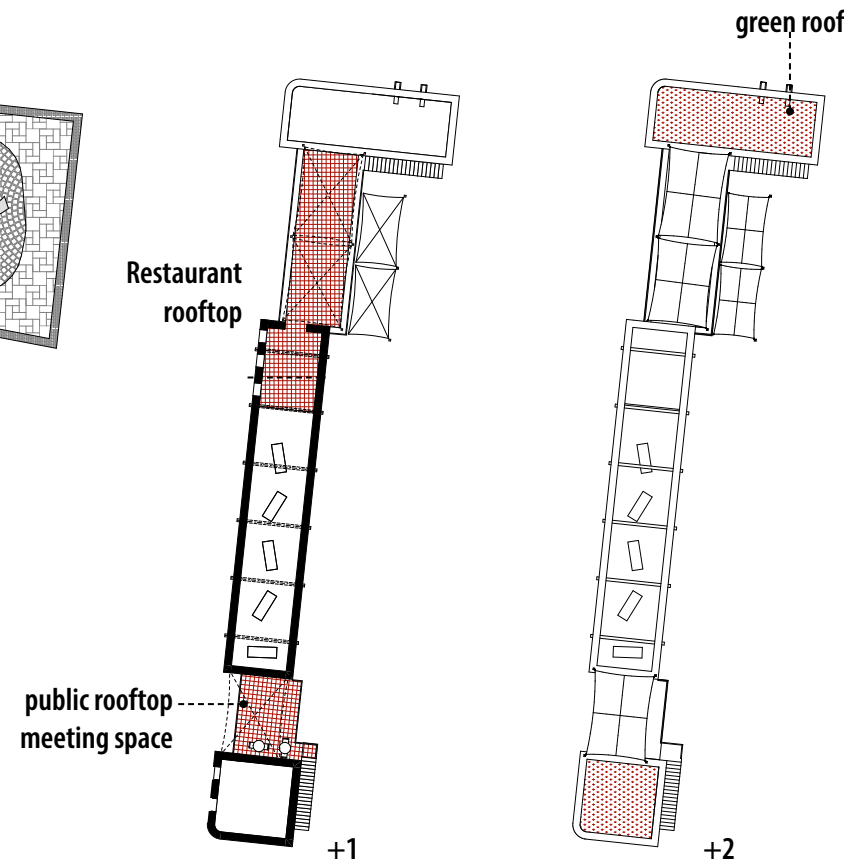
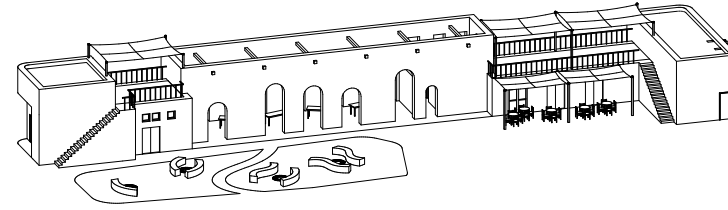
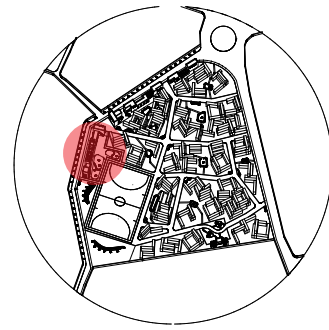
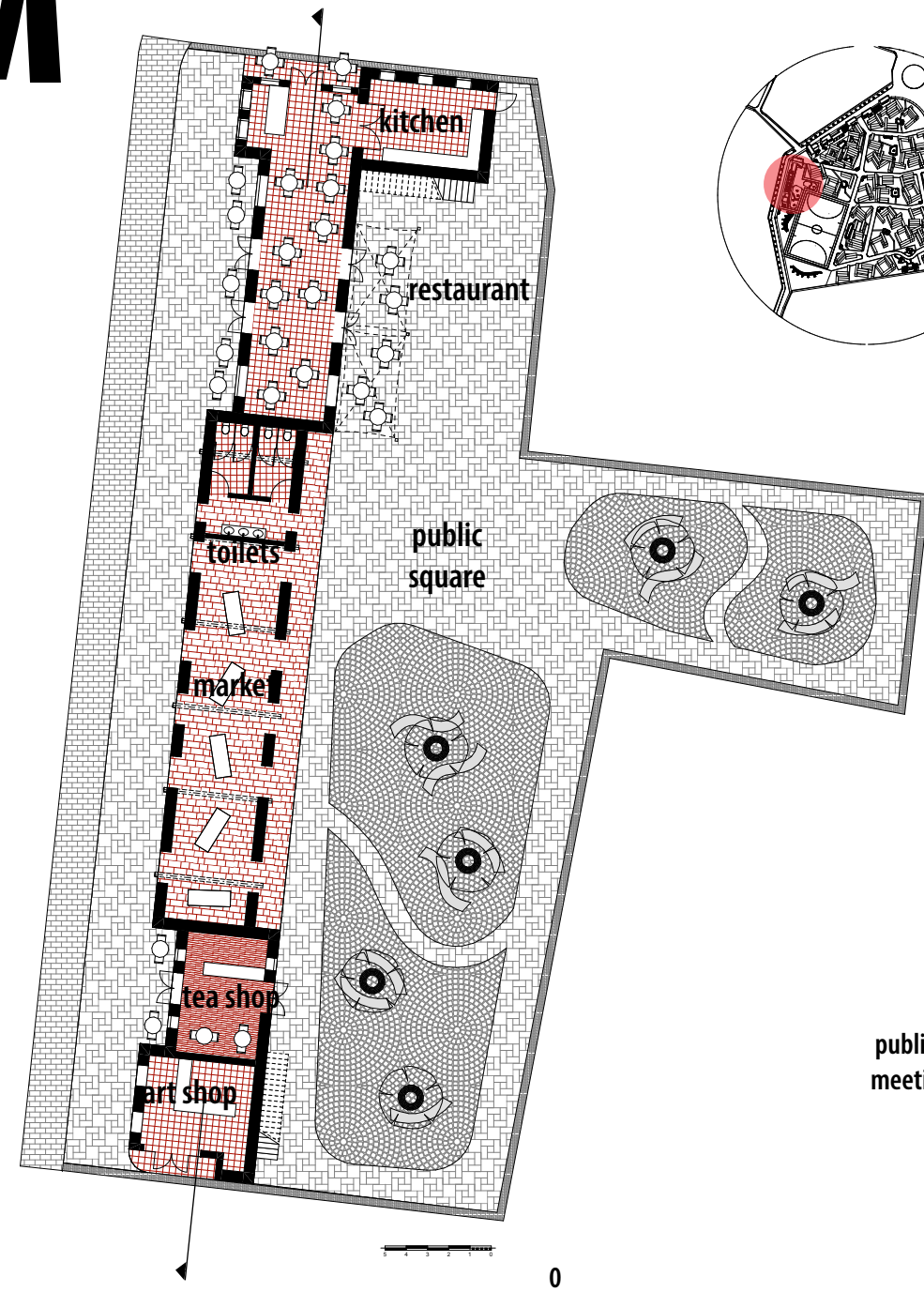


M





# M

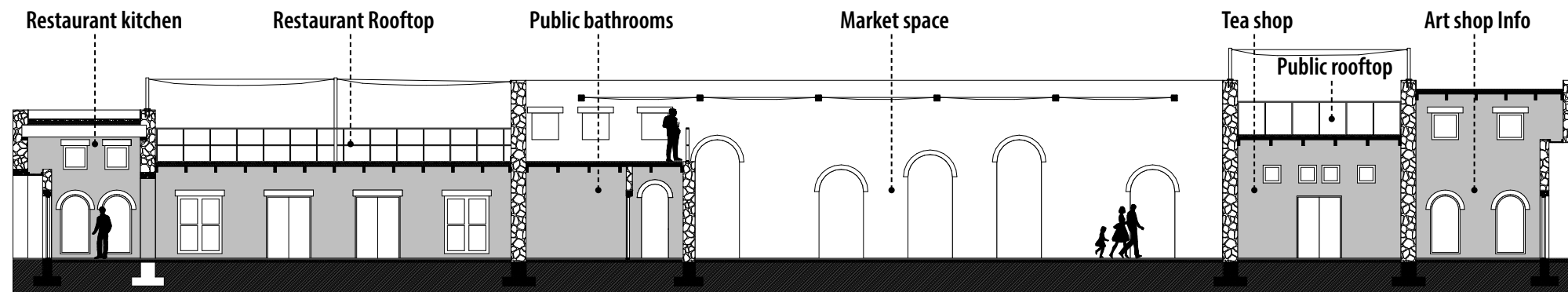


Gutter detail  
1:10

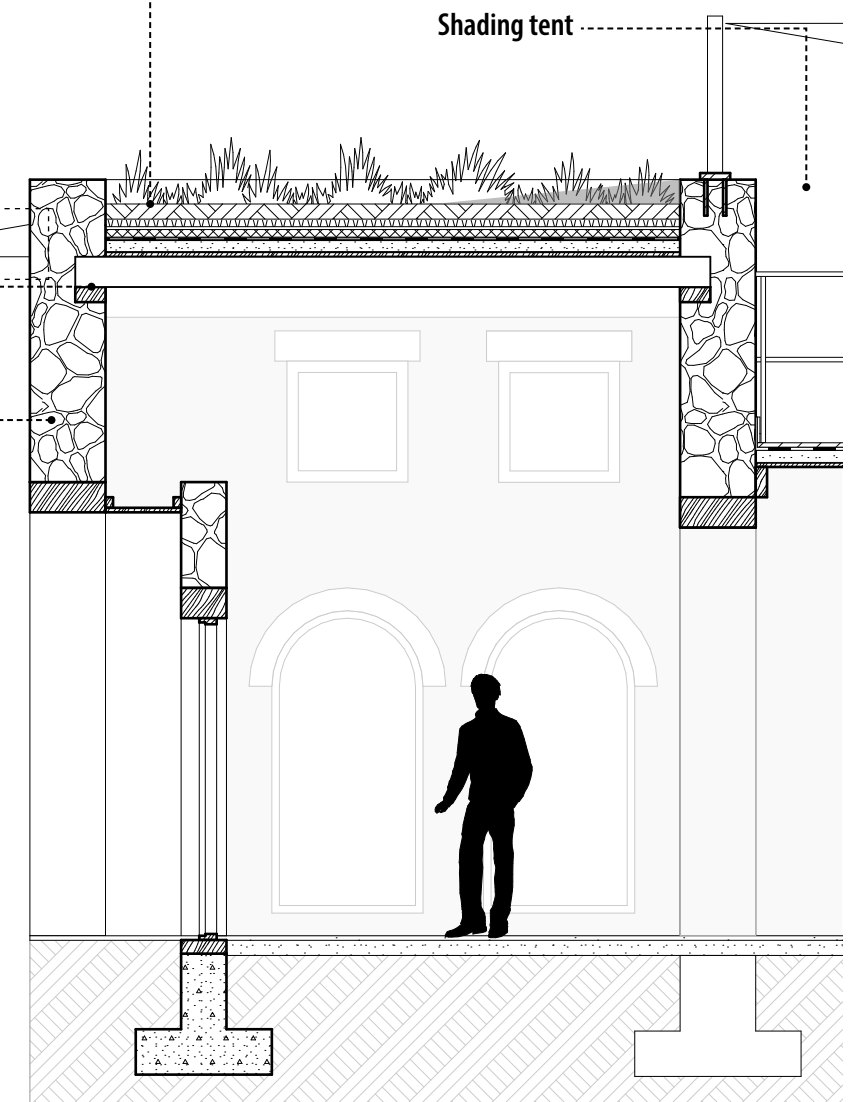
- Green roof:
- Green roof sedum
- Growing media
- Attenuation layer
- Kemperol 2k PUR layer
- Insulation board
- Vapour barrier
- Gutter detail
- Timber wall plate

500mm Stone wall  
(reused stone existing site wall)

Shading tent



section 1  
1:200



section 1  
1:50





**Cultural restuarant**





Cultural restaurant





**Cultural restaurant**





**Small tea shop**





**Art/Info shop**



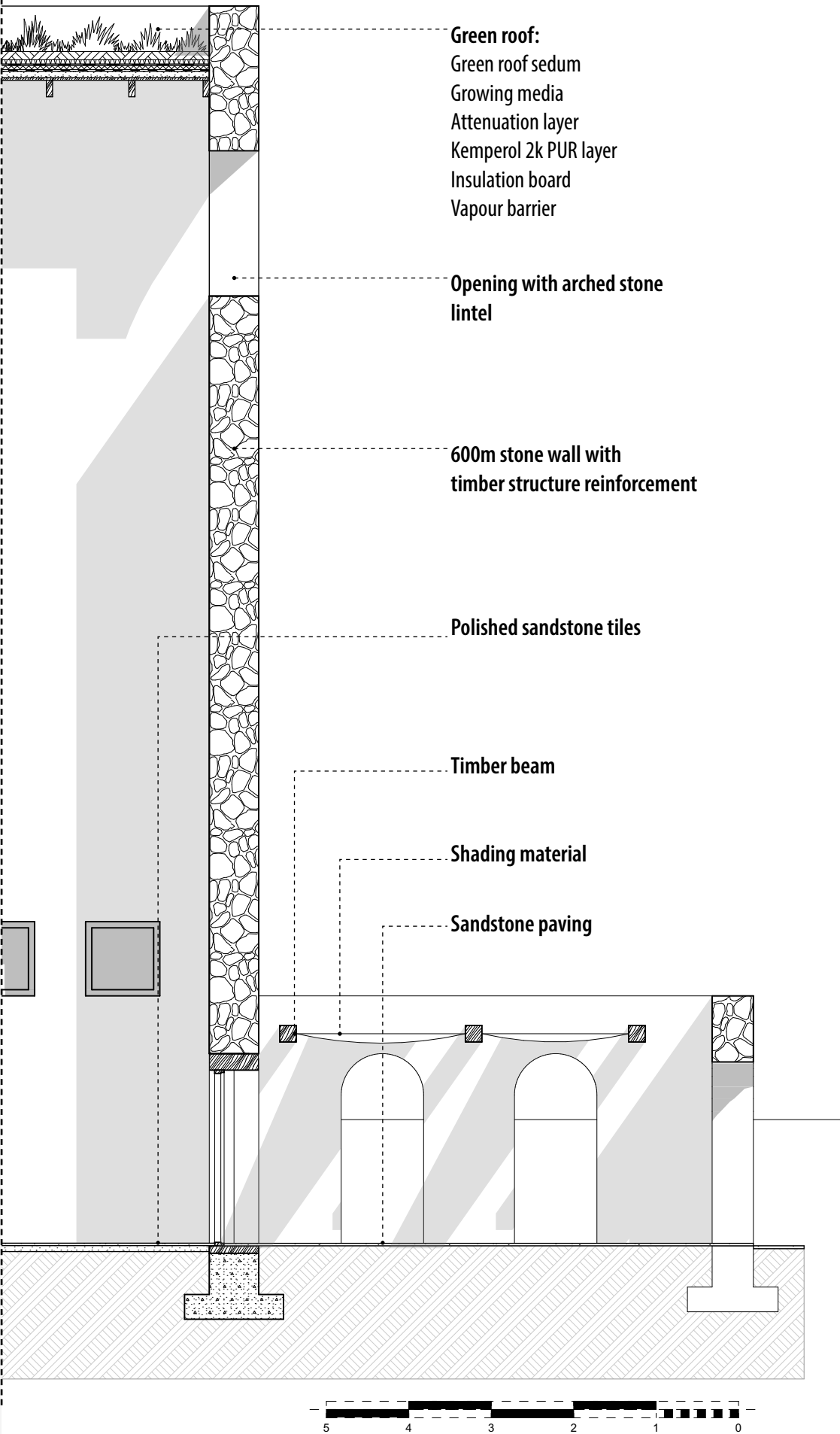
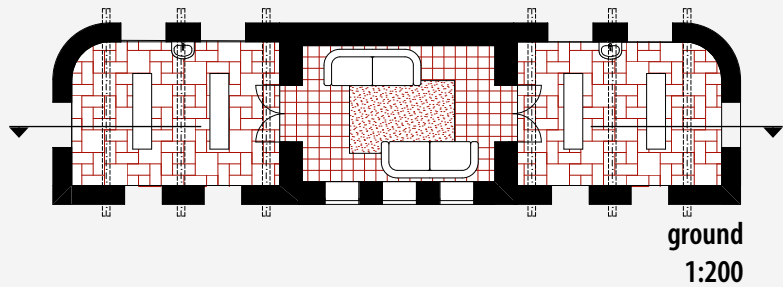
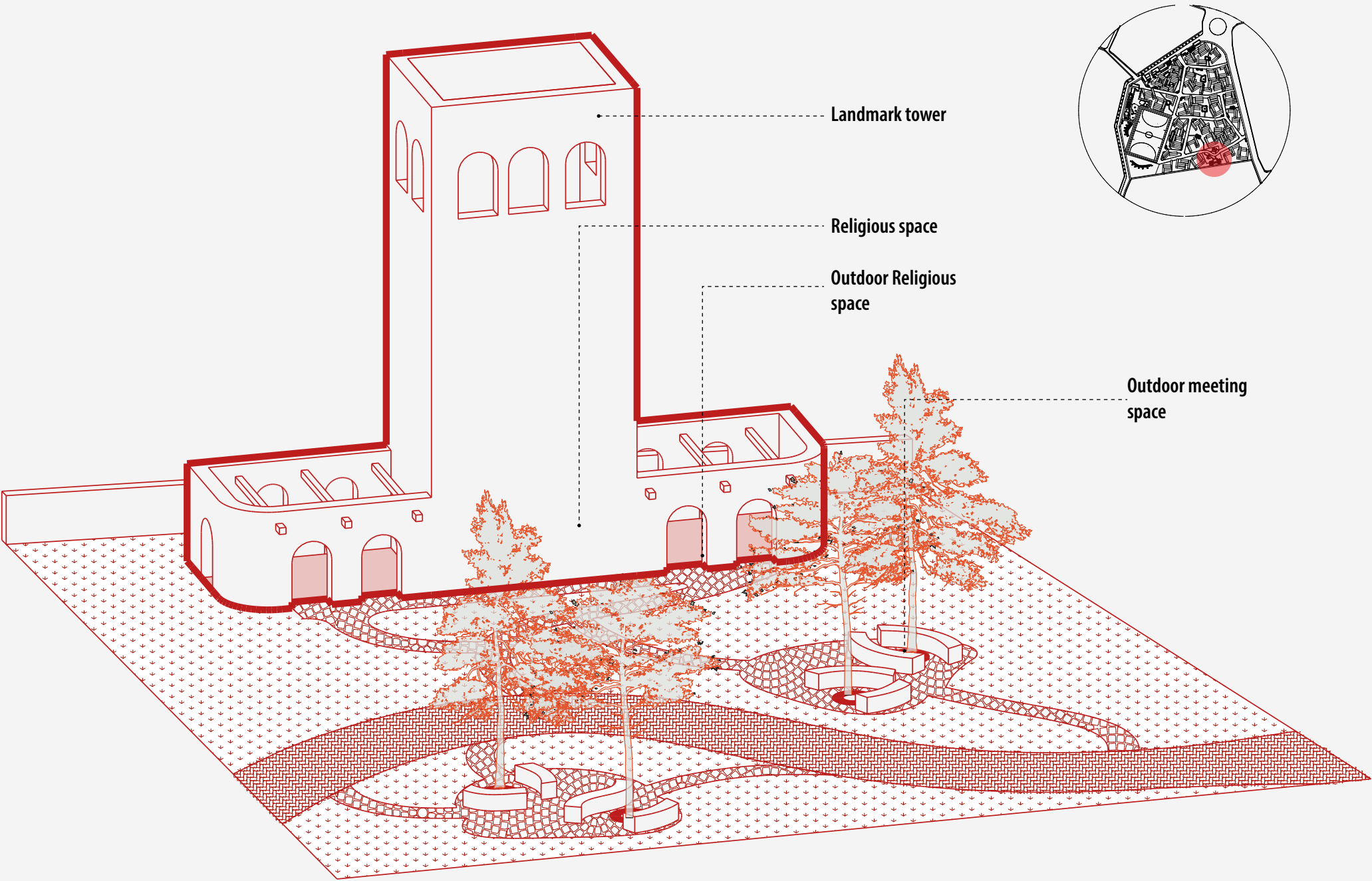


**General shop**



M

Meditation hall and landmark







**Meditation tower & square**





**Meditation tower**



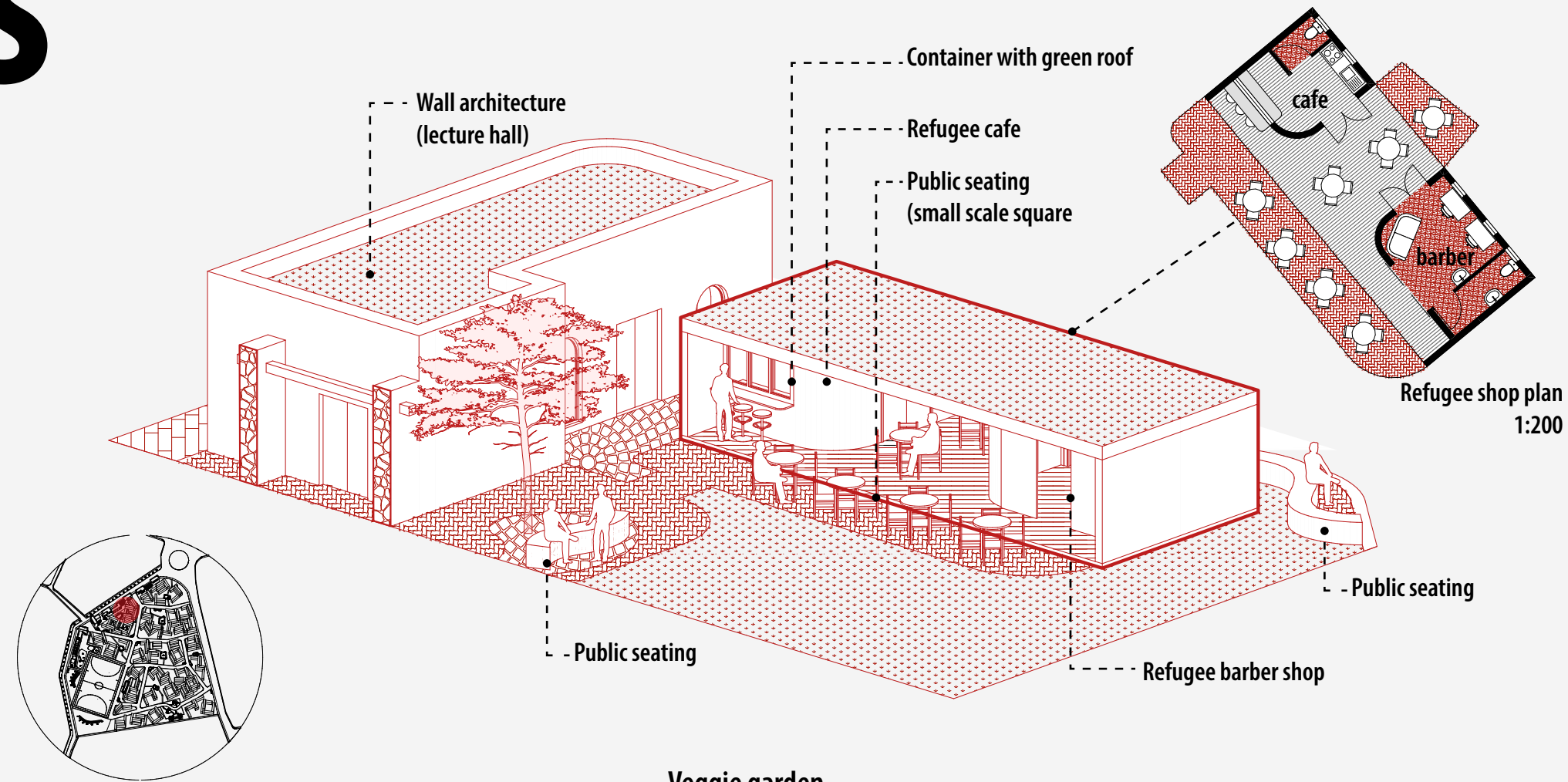


**Meditation tower**

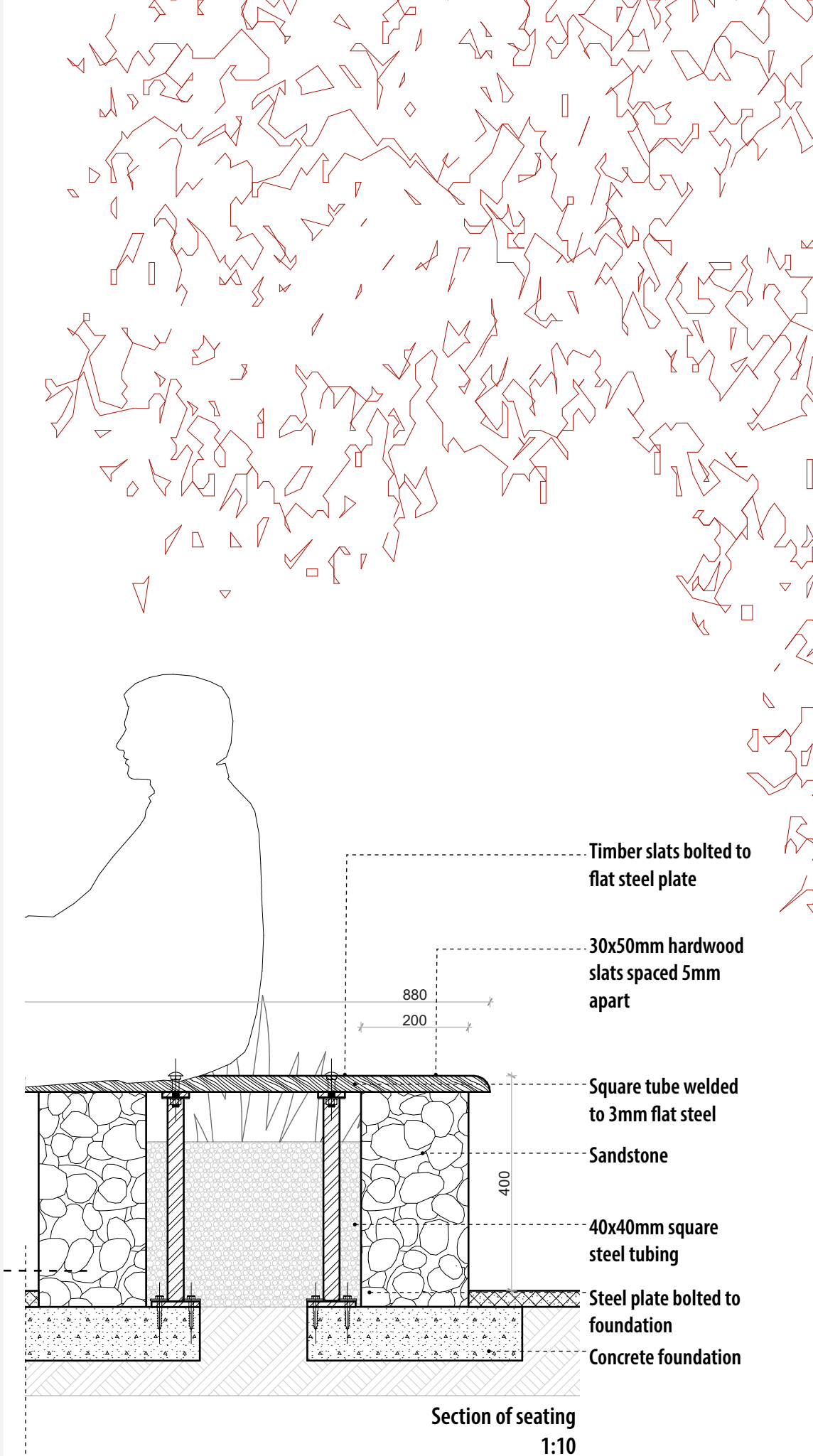
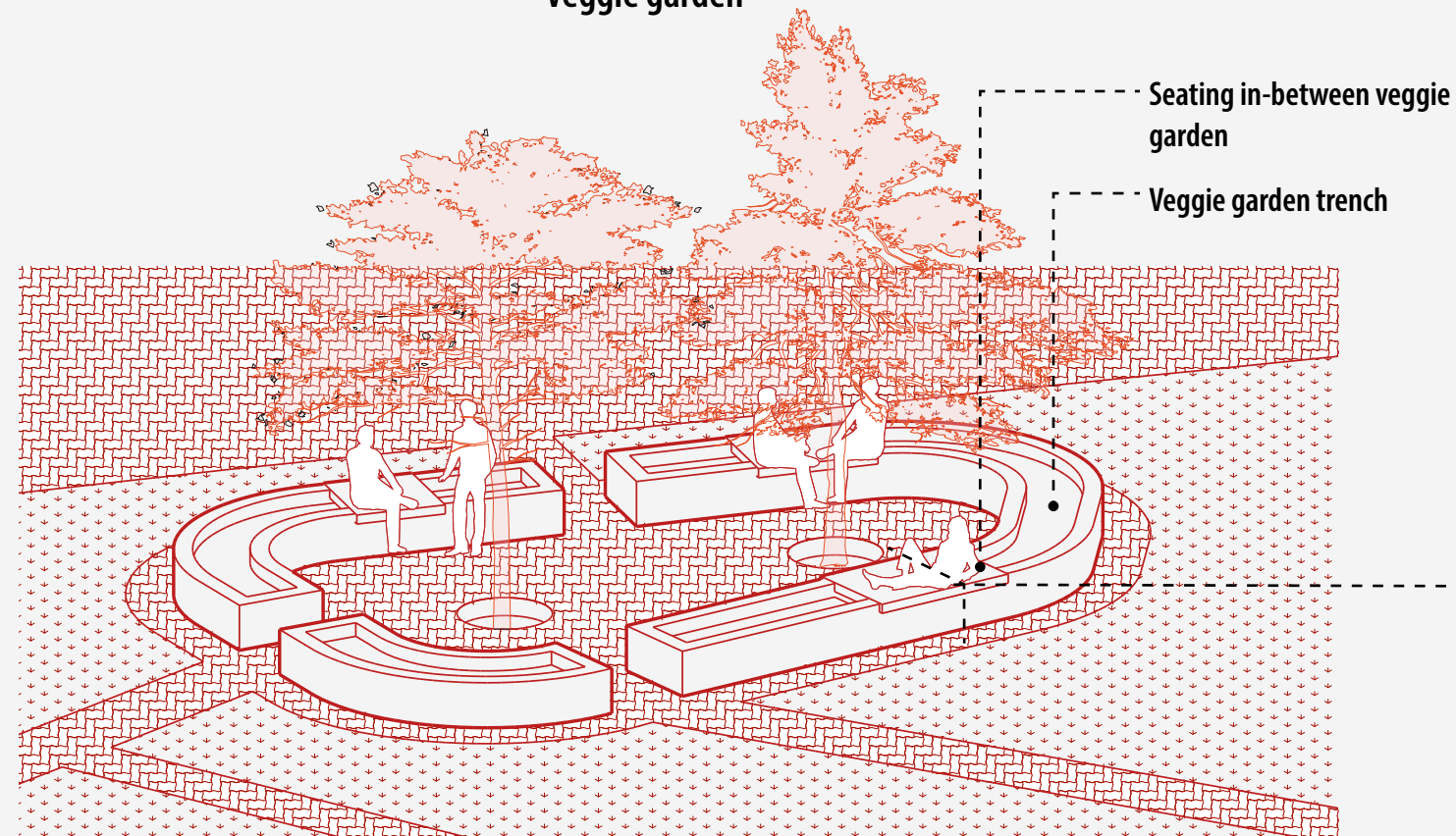


S

## Refugee shop and barber



## Veggie garden







**Vegetable garden**





**Flexible container (cafe & barber shop)**



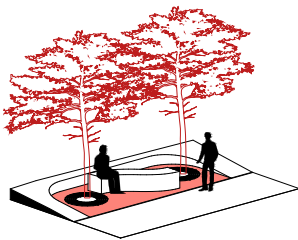


**Flexible container (cafe & barber shop)**

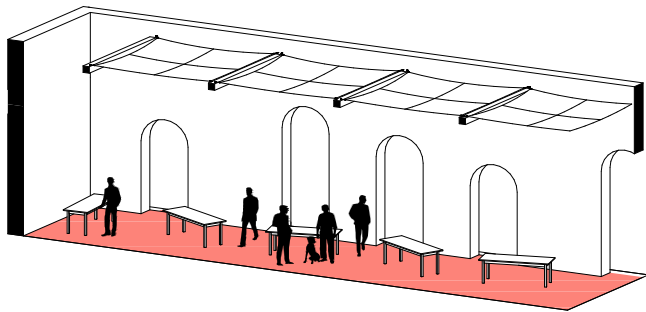


S

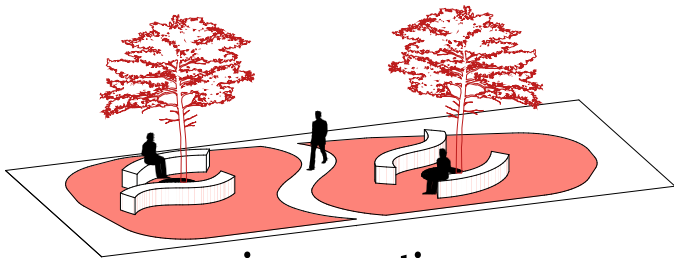
Social meeting spaces



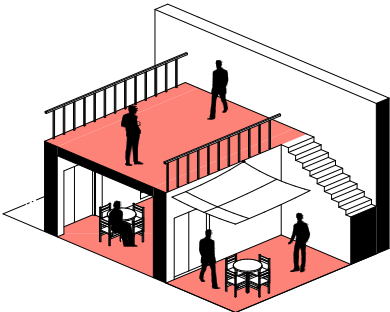
bus stop



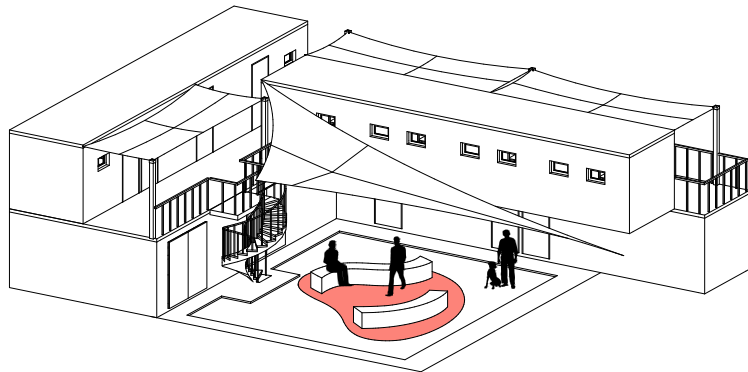
market space



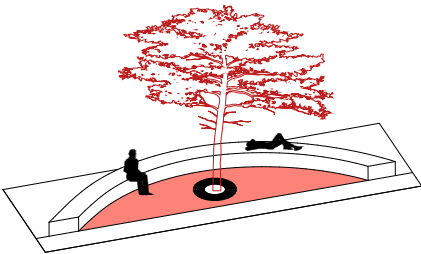
piazza seating



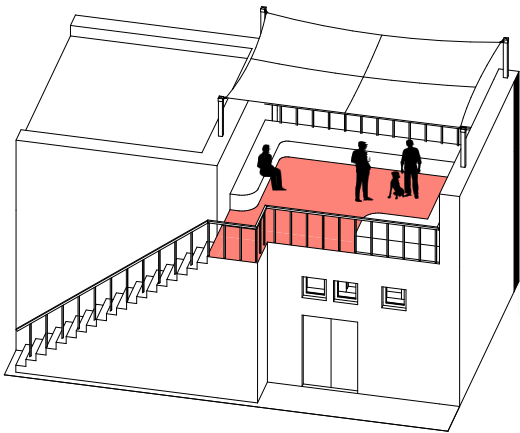
Roof top restaurant



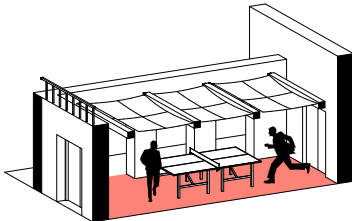
courtyard container



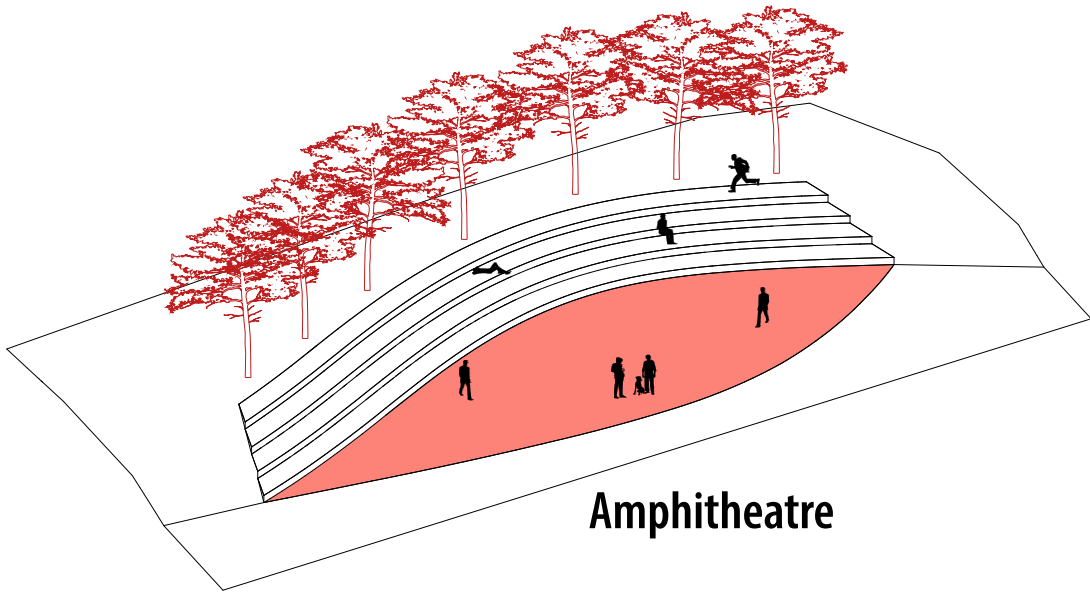
seating street



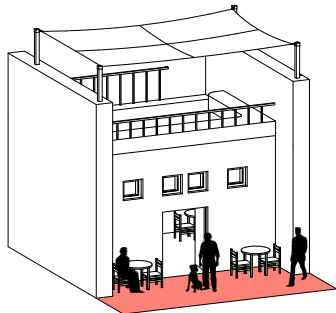
public rooftop



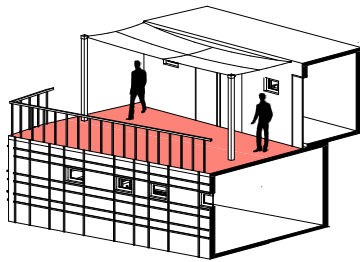
courtyard workshop



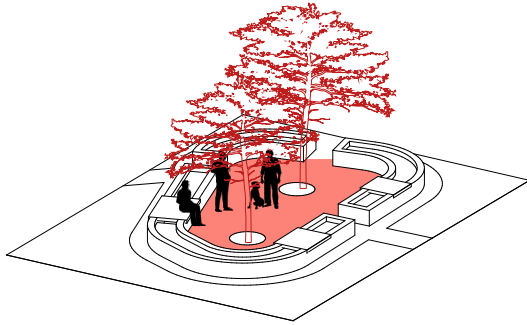
Amphitheatre



Tea shop



Rooftop container



Veggie garden





Small seating





**Small seating**





**Container home walk way**





**Bus stop (east)**



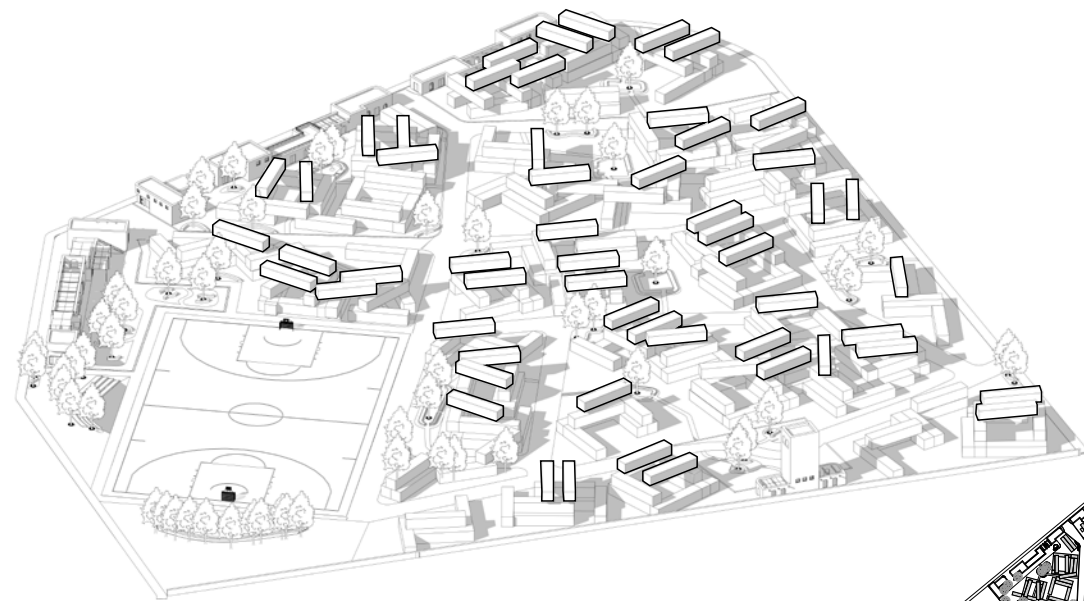
# Piazza



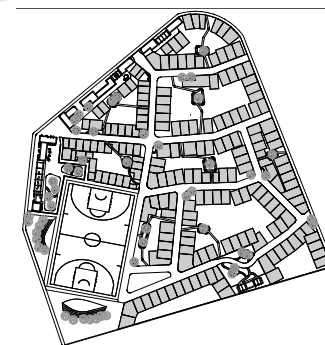


L

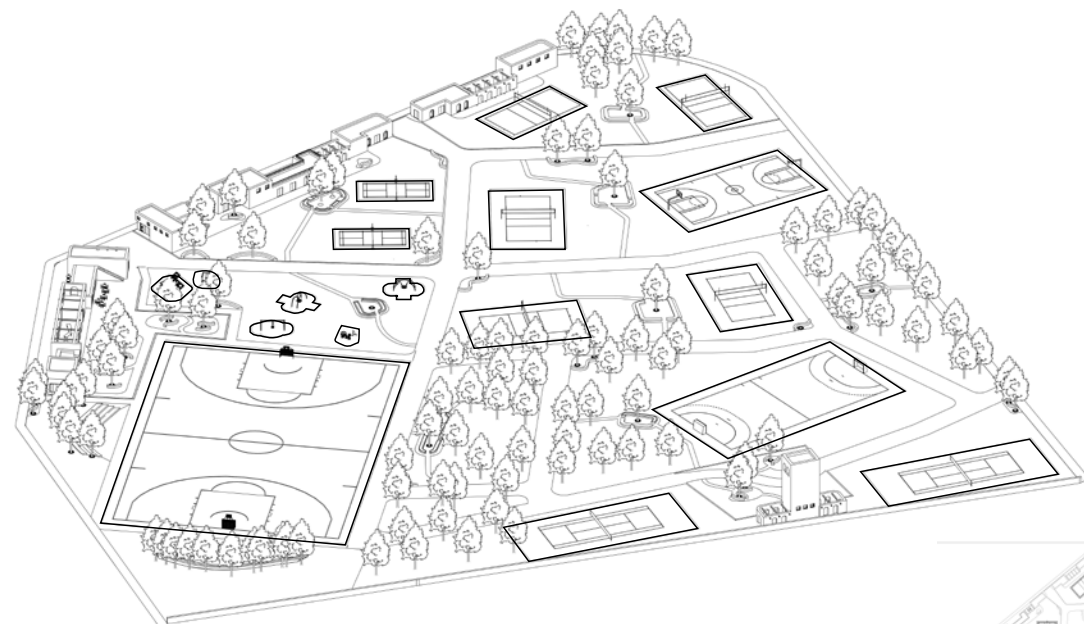
**Scenario 1**  
**1/3 additional housing**



**Scenario 2**  
**New Maltese neighbourhood**



**Scenario 3**  
**Sports facility**



**Scenario 4**  
**Green park**

